

Notes on Selected Camden Postcards

by Harlan Radford, Jr.

MARKET STREET, EAST FROM THIRD STREET



- Sepia, unmailed but with penned message on reverse dated 12/5/09. The sender writes: "My dear little

Sweetheart: On the card is a picture of the office where I go every day. It is the white step next to the awning and the first floor of that building is the office. It is a very pleasant place. I thought you would like to see the picture. With much love for you C. Searl." Note buildings setback at corners. This area was the heart of the downtown Camden business district and the wide avenue also accommodated street car service.

YOUNG MEN'S CHRISTIAN ASSOCIATION

- The undivided back postcard was postmarked in Camden, N.J. Aug. 25, 1909.



MUNICIPAL PIER, CITY OF CAMDEN, FRONT VIEW

- An unmailed postcard showing the Camden Municipal Pier

at the foot of Spruce Street. Built in 1920-1921, this facility remained dormant for four years due to the lack of sufficient water depth to accommodate the big freighters. The City Commissioners had the necessary dredging done and the first shipment of cargo eventually occurred in March of 1925. By 1927, nine steamship lines would call at Camden.

MUNICIPAL PIER, CITY OF CAMDEN



- An unused postcard showing the Camden Municipal Pier as viewed from the Delaware

River. This facility and the increased water-borne commerce helped spur Camden to becoming a thriving industrial city.

TOWERS THEATRE

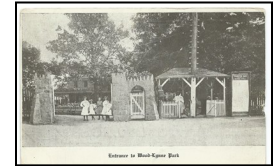
- Mailed and postmarked Feb. 25, 1918, this postcard shows The Towers / Towers Theatre



located at the corner of Broadway and Pine Street in Camden, N.J. The abundance of American Flags and bunting in front of the building make for quite a splendid sight along with the vintage street car.

ENTRANCE TO WOOD-LYNNE PARK

- A group of girls stand at the entrance of the very popular Wood-Lynne Park. Postmarked Camden, N.J., JUN. 5, 1909.



JORDAN HOMESTEAD

- An unused, undivided



back postcard depicts the old Richard Jordan Homestead at 1173 Chestnut Street, Camden, NJ. Erected

in 1747, this was the home of a prominent Quaker minister known to oppose slavery in the 1830s. Probably dates from 1904-1910.

TOMB OF WALT WHITMAN

- This unused, di-



vided back real photo postcard shows the tomb of famous poet Walt Whitman c.1904, located at Camden's

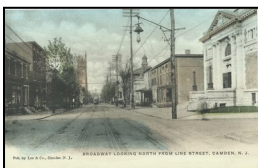
beautiful Harleigh Cemetery. Known as the Bard of Democracy, he wrote "Leaves of Grass," a landmark in the history of American literature, which during his lifetime went through seven editions and expanded to some 300 poems.



MOOSE HALL - This divided back real photo post card view shows the NEW MOOSE HOME / L.O.O.M. No. 111. Obviously they are celebrating their opening occasion with lots of fanfare including bunting adorning the front of their new building. Note the conspicuously mounted large moose head with large antlers above the second story. Enhancement of the vintage auto should reveal a sign that seems to suggest that the vehicle is part of a give-a-way or raffle of some sort in conjunction with a local car dealership. This post card was mailed to a Philadelphia address and was postmarked Camden, N.J. on OCT. 2, 1911.



BROADWAY LOOKING NORTH FROM LINE STREET, CAMDEN, NJ - Publishers commonly produced both black & white and color postcards using the same photo image. The b/w item is postmarked Camden JUL 1, 1912 while the color version was not posted. In this street scene at the intersection of Broadway and Line Streets in front of a building with adjacent row houses, we see two sets of rail tracks set in the street with a street car in the distance. The building on the right is the Camden Free Public Library, or the Carnegie Library as it was otherwise known, since the steel baron Andrew Carnegie himself funded it. Located at BROADWAY and LINE STREET, the library cost \$100,000 and the furnishings another \$20,000. When the library opened on June 27, 1905, it boasted some 7,000 books.



In this street scene at the intersection of Broadway and Line Streets in front of a building with adjacent row houses, we see two sets of rail tracks set in the street with a street car in the distance. The building on the right is the Camden Free Public Library, or the Carnegie Library as it was otherwise known, since the steel baron Andrew Carnegie himself funded it. Located at BROADWAY and LINE STREET, the library cost \$100,000 and the furnishings another \$20,000. When the library opened on June 27, 1905, it boasted some 7,000 books.

BROADWAY, LOOKING NORTH FROM LINE STREET, CAMDEN, NJ - "Wish you were here" is the penned note on the address side

of this post card. Shown here is yet another variation of Camden's Public Library at Broadway and looking North from Line Street. Postmarked Camden, N.J. on JUN 19, 1912, and published by Lee & Co., Stationers, Camden, N.J., this item was actually printed in Germany. Four more views of Camden Free Public Library follow in chronological order.



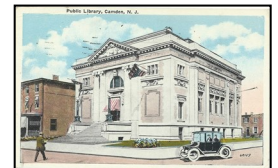
FREE LIBRARY, CAMDEN, NJ, 1909

PUBLIC LIBRARY, CAMDEN, NJ, 1910



FREE LIBRARY, BROADWAY AND LINE ST., CAMDEN, NJ, 1912

PUBLIC LIBRARY, CAMDEN, NJ, 1929



CAMDEN'S MARKET STREET - Produced by Lee & Co., Camden, N.J., this undivided back, unused

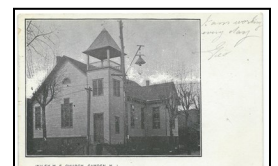
post card shows Market Street looking East from Third.



CAMDEN'S MUNICIPAL HOSPITAL - This unused

post card shows the Municipal Hospital located at Mt. Ephraim and Atlantic Avenues, Camden, N.J.

WILEY M.E. CHURCH - Produced by the Camden Card Co. located at 107 N. 25th St., this undivided back post card bears a Camden, N.J. postmark



dated NOV. 22, 1906,

EMANUEL BAPTIST CHURCH - This unmailed post card shows the Emmanuel Baptist Church c.1910, located at Fourth and Mt. Vernon Streets,

Camden, N.J.

EAGLE BUILDING - This mailed postcard bears the CAMDEN, N.J. postmark dated OCT. 8, 1913. Hand written message on the reverse side states: "One of our fraternal buildings. It is very pretty."



WELCOME TO PYNE POYNT

- It doesn't hardly get any better than this! This vintage real photo post card shows an early 20th century Camden neighborhood putting on an enthusiastic patriotic display, circa 1910.



A large banner flanked by huge American flags spans the street proclaiming, "Welcome To Pyne Poynt." Numerous festive paper lanterns and more 48-star American flags frame the entire street.

Is that a Sullivan's storefront or a political campaign office?

The boys with their knee-length knickers, white shirts and ties, the girls with their lovely short-sleeve summer dresses and bows in their hair, and of course, the young men with their bow ties, hats, and skimmers all elicit an involuntary smile from the appreciative viewer.

Catch the brave character in the jeff cap at the roof line. Has he just completed attaching flags above that first second-floor window

and tying off the line suspending the banner?

Perhaps the occasion recorded here was July 4, 1910. This mailed divided-back post card bears a Camden, N.J. postmark stamped SEP 9, 1910. Photographer Wm. B. Cooper of Medford, N.J. captured this amazing moment in a neighborhood's history over a century ago. The message, addressed to a recipient living on River Avenue in Camden, reads, "Best Wishes from Edith."



BROADWAY NORTH OF STEVENS ST., EAST SIDE -

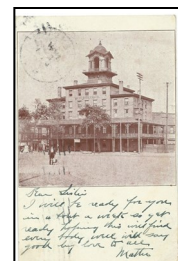
This RPPC view is full of period details. While unmailed, this divided back real photo post card view very likely dates from 1905-07. The corner store shows two Coca-Cola signs, as well as signs for cigars, Moxie, and one indicating the store also serves as Post Office Station No. 7. In addition to the street car tracks shown here, one can see two horse drawn wagons to the far left down Broadway and hitching posts for horses and wagons provided along the sidewalks. Two standard barber poles advertise the barber shop located next to the corner store. At the intersection in the foreground stands a vintage overhead electric street lamp. There is a large sign that says COLUMBIA further down this street and one wonders just what business that signage announces.



BIRD'S EYE VIEW OF COOPER'S RIVER AND BRIDGE FROM FOREST HILL - This color postcard,

postmarked CAMDEN, N.J. on AUG. 31, 1913, shows a trestle bridge over Cooper River.

WEST JERSEY HOTEL - This early, undivided back post card was mailed at CAMDEN, N.J. on NOV. 25, 1907 to a recipient in Borden-



town, N.J. Possibly this is the same West Jersey Hotel once located at Market Street and Delaware Avenue in Camden. Note the gentleman and his dog in the foreground.



THE LAKE, WOODLYNNE PARK, NJ

- A canoe, a row boat, boat landing and the charming rest pavilion complete a tranquil picture, c. 1905. In just a few short years from the time this image was captured, this popular Camden amusement park would also be known for its thrilling railroad ride and towering airship rides which circled around and around high in the air.



SEWELL SCHOOL, CAMDEN, NJ

- Postmarked NOV 28, 1911, at Camden, NJ. Close inspection reveals the following interesting details: Notice the bicycle built-for-two; the young lad holding a baseball bat; and an assembled group of boys and girls, perhaps students who at that time attended this particular school.

COOPERS CREEK - Penned on front of RPPC is the following: "This is Cooper Creek - a very pretty spot of water." Circa 1905; not mailed.



ST. JOHN'S CHURCH, BROADWAY, CAMDEN

- RPPC, not mailed or postmarked but has date noted on front - 6/19/08.



GEORGE WASHINGTON SCHOOL, 27TH & CAMBRIDGE, CAMDEN, NJ

- Circa 1905; not mailed.

ST. GEORGE M.E. CHURCH, 33 & MICKEL ST., CAMDEN, NJ - Unmailed/no postmark/no message.



ST. GEORGE M.E. CHURCH - Postmarked SEP 18, 1913, at Camden, N.J. Photo view shows St. Georges M.E. Church on the right and parsonage on the left.

GRACE PRESBYTERIAN CHURCH, 27TH & GARFIELD ST., CAMDEN, NJ

- Unmailed/c.1905/no writing



JOS. M. GARFIELD SCHOOL, CAMDEN, NJ

- Postmarked JUN 4, 1906.

BOULEVARD, FOREST HILLS PARK, CAMDEN, NJ

- A real photo post card image postmarked AUG 17, 1908.



FOREST HILL PARK, CAMDEN, NJ

- postmarked CAMDEN, N.J. on AUG. 31, 1913 and shows the bridge and a vintage automobile. Can any car buff identify the automobile?

FOREST HILL PARK, CAMDEN, NJ

- Postmarked CAMDEN, N.J. on MAY 20, 1908. Penned inscription on the lower front reads: Here's a new park just finished this spring." Notice two gentlemen standing in front of the newly constructed outdoor pavilion.



HILL PATH, PYNE POYNT, CAMDEN, NJ

- RPPC is postmarked CAMDEN, N.J. on MAY 27, 1909. Notice the mother and her child standing at the top of this hilly path. The hand-penciled message reads "We were at this Point Sunday where we took walk. Joseph's (perhaps the child in this image) second double tooth has come through since we have been here. Raining again today."





UNION PARSONAGE & CHURCH, CAMDEN, NJ - Postmarked CAMDEN, N.J. on MAY 27, 1908.

TAYLOR'S DRUG STORE -

This early undivided back postcard was postmarked CAMDEN, N.J. on JUL 11, 1906. Note the four men standing and posing in front of Taylor's Drug Store. Notably, they are two cops, each with their badges and police hats and uniforms, perhaps Mr. Taylor with white pharmacist jacket, and a store clerk. Could this be Broadway with overhead wires and trolley tracks? Please advise if you know.



TABERNACLE M.E. CHURCH, 3 & PEARL ST., CAMDEN, NJ - This real photo view shows the TAB-

ERNACLE M.E. CHURCH at 3 & PEARL ST. IN CAMDEN. See the penned notations of Parsonage on the left and the Guild House on the right side of this photo. Postmarked and mailed CAMDEN, N.J. on JUL 18, 1911



RESERVOIR PARK, CAMDEN, NJ - Reservoir is obviously misspelled on the card title of this undated and unpost-

ed RPPC, c. 1905. Notice two young lads sitting in the park posing for this photo.



COOPER HOMESTEAD - Possibly, the family home of Dr. Richard M. Cooper. Postmarked Camden, N.J.

on JUL 25, 1908. Penned message mailed to a New Hope, PA address states "Just a how d' do on your arrival. Will see you on Monday, 10:00AM."

STOCKTON WHEELMAN, 28 & HIGH ST., CAMDEN, NJ -

This card was never mailed



and has no writing or postmark. Circa 1910 or possibly earlier.

YMCA BOARDING HOUSE, CAMDEN, NJ - Unmailed/c. 1908/ no postmark. Notice the lovely flowers growing on the trellis or latticework on the front porch!



STEVENS ST. WEST OF BROADWAY, CAMDEN, NJ - This is a great c. 1908 view at the intersection of Broad-

way (going left and right or across this image) and Stevens Street. Notice the trolley tracks and overhead wires running along Broadway in the foreground. This RPPC is undated and was not mailed. Things to note: the vintage electric light street lamp, the two horse-drawn carriages and the ladies in the windows of the Christmas Shopping Sale store windows to the front right.

PINE EAST OF BROADWAY, CAMDEN, NJ - This postcard was mailed and postmarked in CAMDEN on DEC. 29,



1908. Notice the horse-drawn wagon parked down the cobblestone street on the left. Several individuals walk along the brick in-laid sidewalk. A row house behind the closest figure displays a vertical patriotic decoration.

BROADWAY, SOUTH OF MICKEL, CAMDEN, NJ - A

real photo view looking south, was postmarked Camden NOV 17, 1908, shows the trolley tracks in place as well as the prominent Broadway M.E. Church off in the distance. The sender of this card penned four - 4 "X"s over a building on the right and he writes this message: "Where the cross is our store."



BROADWAY LOOKING S., CAMDEN, NJ - A more recent color view, while not posted,



also looks South on Broadway with the same M.E. Church and a trolley car in the distance.



CAMDEN CARNIVAL - An altogether charming street scene. But, can we be sure this is Camden, NJ, and if so, where in Camden? Get out your magnifying glass, get lost in this wonderful moment in time, and look for clues. Where have you seen that building at the right edge before? See the end of the next column for the answer. The reverse side of this postcard reveals a Gloucester City, NJ JUN 22, 1909 postal marking. Card printed by Wm. B. Cooper, Photographer - Medford, N.J.



TOWER THEATRE, BROADWAY & PINE ST., CAMDEN, NJ - Postmarked Camden on AUG 27, 1918.

BERKLEY ST., W. OF NEWTON AVE., CAMDEN, NJ

Corner neighborhood store, circa 1905. The kids from the block, and a neighbor or two watch as the camera records a girl standing on the steps of the corner store. Signs for P&G Naptha Soap, Davis Butter, Kolb's Pan-Dandy Bread, and Vulcanol (a stove polish) frame the entrance to the small neighborhood enterprise.



Camden Central Airport postcards and commemorative first day covers - From 1929-1940 Camden Central Airport served South Jersey and Philadelphia with passenger and mail service. Remembered today as only a footnote in aviation history, famous aviators such as Captain Eddie Rickenbacker, Charles Lindbergh, Amelia Earhart, and even the errant "Wrong Way" Corrigan are linked to the airport's events.

Perhaps most incredibly, July 6, 1939, saw the inauguration of daily airmail service linking Central Airport in New Jersey and the

roof of the new General Post Office in Philadelphia at Thirtieth, Market and Chestnut Streets by autogiro.

Read more about the astonishing chronicle of this short-lived airport in Harlan Radford's ***A Short History of Camden's Central Airport in Postcards and First Day Covers.***



JUST LANDED AT CENTRAL AIRPORT, CAMDEN, NJ

CENTRAL AIRPORT, CAMDEN, NJ - waiting rooms, hangars and beacon tower



CENTRAL AIRPORT, CAMDEN, NJ - airport, planes, hangar & crowds

FIRST SCHEDULED FLIGHT JUL 6, 1939, CAMDEN TO PHILA., SIGNED BY PILOT JOHN M. MILLER



MAY 25, 1935 TRIAL IN-BOUND AIRMAIL



COVER FLOWN CAMDEN TO PHILA. POST OFFICE ROOF

- Read more here about the short-lived autogiro-flown airmail route between Camden's Central Airport and Philadelphia Post Office Roof.



COOPERS HOSPITAL, CAMDEN, NJ - Constructed in 1877, at a cost of \$95,000, Cooper Hospital

began with just 30 patient beds. Nurses in training lived in the building to the left in this c.1908 photo view. See several more views of Cooper Hospital in the **Camden section** of the **Images Page**.

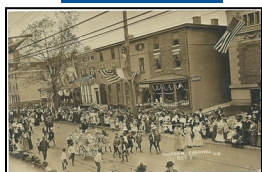
CITY HALL, CAMDEN, NJ - This was Camden's second city hall c.1905, located on Haddon Avenue



built in 1875 for \$140,000. The prominent clock tower cost the city \$3,575.

ANSWER TO LOCATION OF CAMDEN

CARNIVAL: If one were to doubt that this was an actual scene taken in Camden, New Jersey, one only needs to look for minor clues in that view and in these attached four, shown previously.



I knew that something rang a bell and looked familiar to me. Do you know what it was? It was the swag of fruit motif under the three windows on the façade of the building on the right that struck me. I knew I had seen that before - but, where? Well, a quick check to my Camden postcard collection revealed the actual building and location. Here it is! The Camden Free Public Library at Broadway and Line Streets.

Here is another clue - notice that in Library views #1, 2, & 3, the signage with the word-

ing DENTIST appears prominently on the store front next door to the Library. The dates of the actual use as shown by the postmarks on each of these four postcards are in this order: Jan. 1909, Nov. 1910, Aug. 1912, and Aug. 1929. Apparently, the dentist practiced there at least from 1909, through mid-1912. The dentist sign is missing in the last, or more recent, 1929 postmarked postcard. This is fun stuff - uncovering sequential relationships in history through clues in postcards.

- Harlan Radford, Jr.

We welcome readers' observations, comments, corrections, actually almost any kind of interaction that would indicate that this effort is not in vain. - John McCormick, Editor

