

A detailed historical map of Riverton, New Jersey, from around 1875. The map shows a grid of streets including 1st St, 2nd St, 3rd St, 4th St, 5th St, 6th St, 7th St, 8th St, 9th St, 10th St, 11th St, 12th St, 13th St, 14th St, 15th St, 16th St, 17th St, 18th St, 19th St, 20th St, 21st St, 22nd St, 23rd St, 24th St, 25th St, 26th St, 27th St, 28th St, 29th St, 30th St, 31st St, 32nd St, 33rd St, 34th St, 35th St, 36th St, 37th St, 38th St, 39th St, 40th St, 41st St, 42nd St, 43rd St, 44th St, 45th St, 46th St, 47th St, 48th St, 49th St, 50th St, 51st St, 52nd St, 53rd St, 54th St, 55th St, 56th St, 57th St, 58th St, 59th St, 60th St, 61st St, 62nd St, 63rd St, 64th St, 65th St, 66th St, 67th St, 68th St, 69th St, 70th St, 71st St, 72nd St, 73rd St, 74th St, 75th St, 76th St, 77th St, 78th St, 79th St, 80th St, 81st St, 82nd St, 83rd St, 84th St, 85th St, 86th St, 87th St, 88th St, 89th St, 90th St, 91st St, 92nd St, 93rd St, 94th St, 95th St, 96th St, 97th St, 98th St, 99th St, 100th St. The map also shows various buildings, including houses, churches, and schools. A large body of water is visible at the bottom, with a steamship and several sailboats. The text "The Biddle Mansion" is overlaid in a large, red, serif font. Below it, the address "207 BANK AVENUE" and "RIVERTON, NJ" are written in a blue, sans-serif font. Below that, "c. 1875" is written in a blue, sans-serif font. At the bottom, "Celebrating 139 years of history in 2014" is written in a black, serif font.

# The Biddle Mansion

207 BANK AVENUE  
RIVERTON, NJ

c. 1875

Celebrating 139 years of history in 2014

The way we were...



# The way we were...



image courtesy Paul W. Schopp Collection

# Why save the Biddle Mansion?

## **Charles Miller Biddle Residence**

Cor. Bank and Lippincott Aves., Riverton, New Jersey, 10 miles from Philadelphia

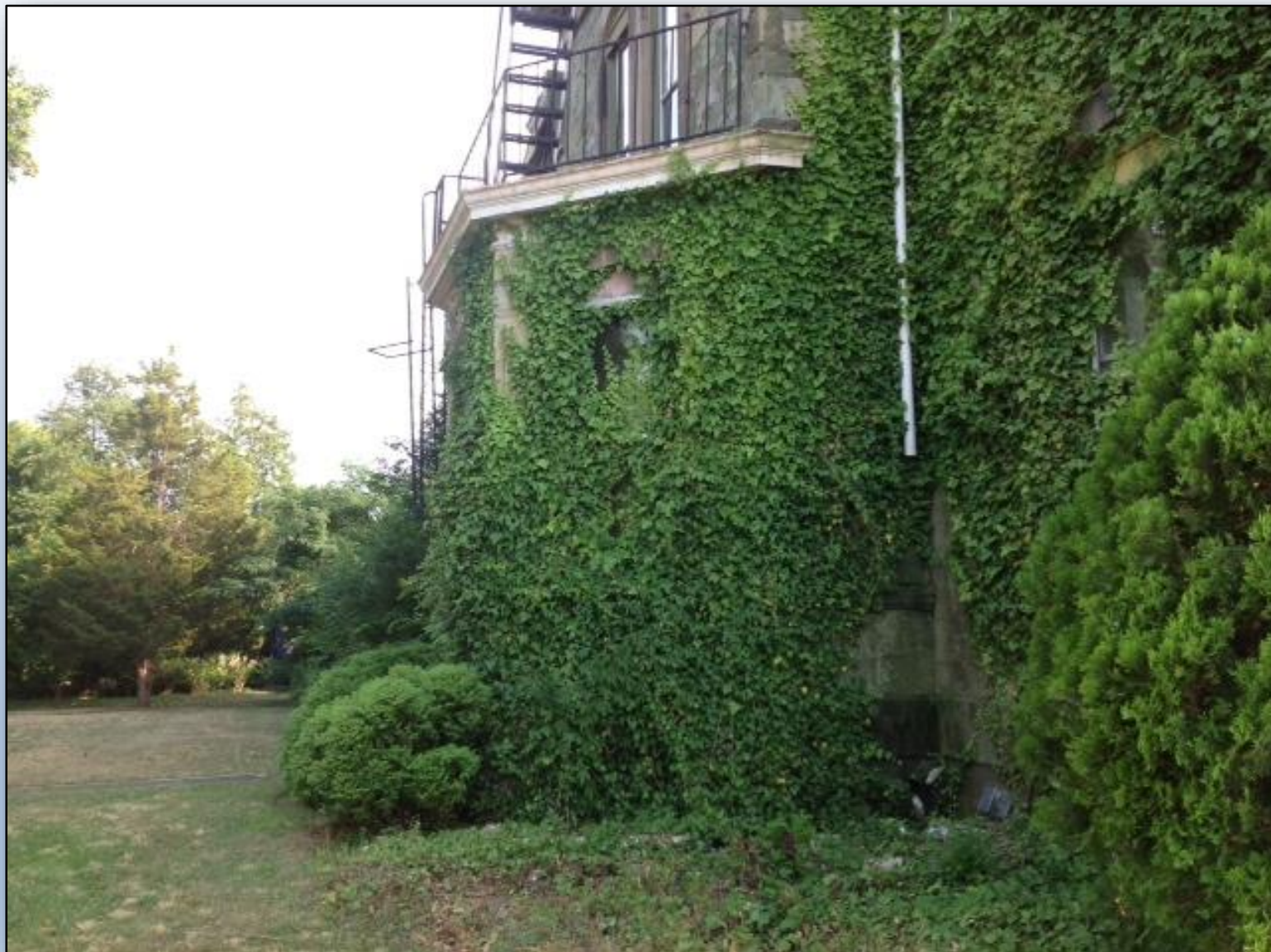
"The most notable residence of Riverton, picturesquely situated on the Delaware, is the imposing and handsome green stone home of Charles M. Biddle, one of Philadelphia's widely known merchants; president Biddle Hardware Co., vice-commodore Riverton Yacht Club, director Trades League, banks, etc."

**King's Views of Philadelphia. Illustrated Monographs. Part 6.**

Published by Moses King, New York. Copyright, 1900 by Moses King.

*Sometimes bad things happen to good houses...*







Before renovation could start we needed to dispose of trash. Twelve of the largest dumpsters were used equaling 54.27 tons, or 108,540 pounds of trash. This figure did not include scrap metal.





The porch had one of the first air conditioning systems in the United States. Cool air from ice blocks was vented through grates on the porch and through the faux fireplaces in the ballroom. The grate on the porch still remains.







# Making a run for it...

































# The back before...



# The back after...

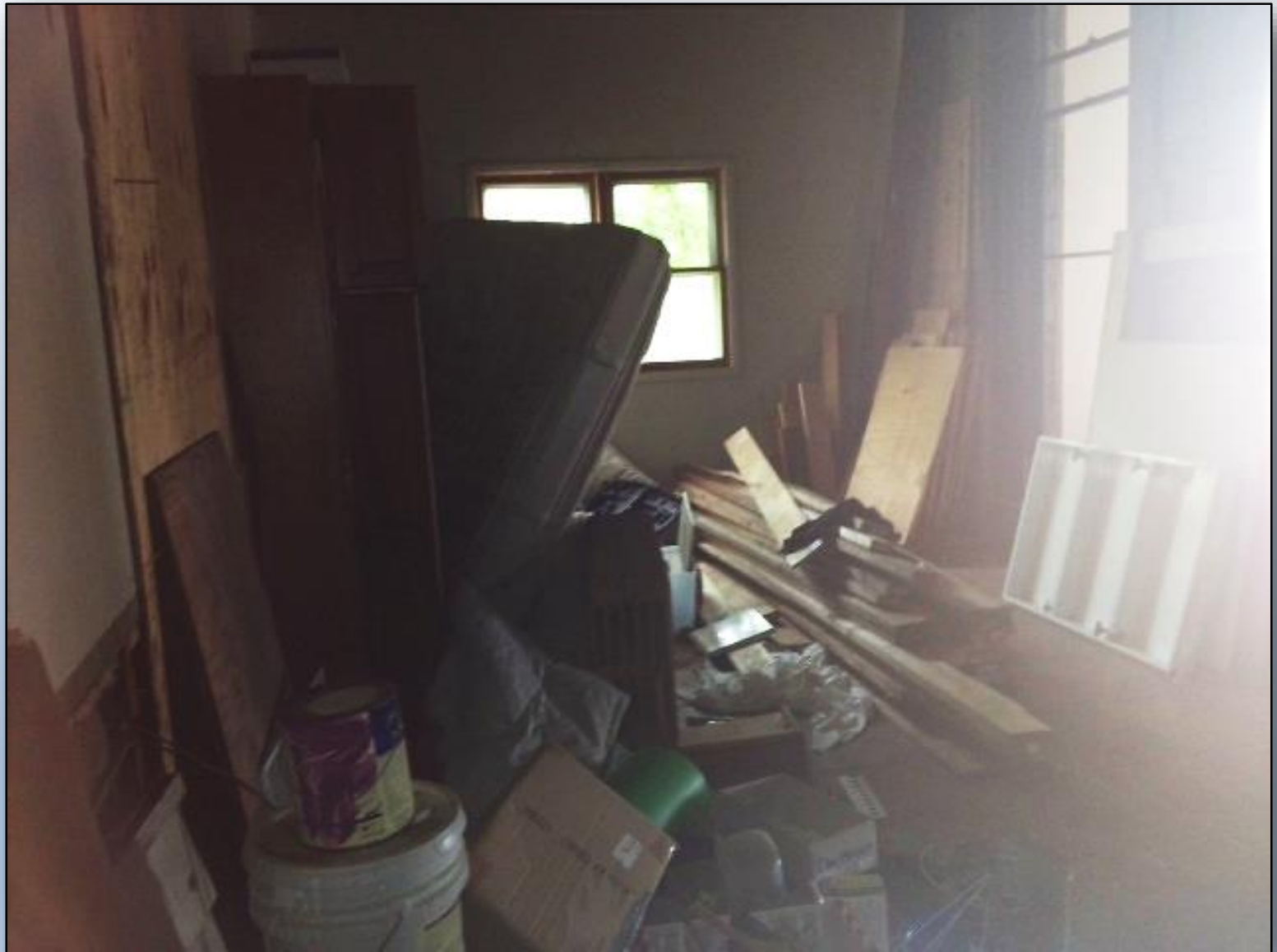




















# Kitchen Suite 1

**Before**



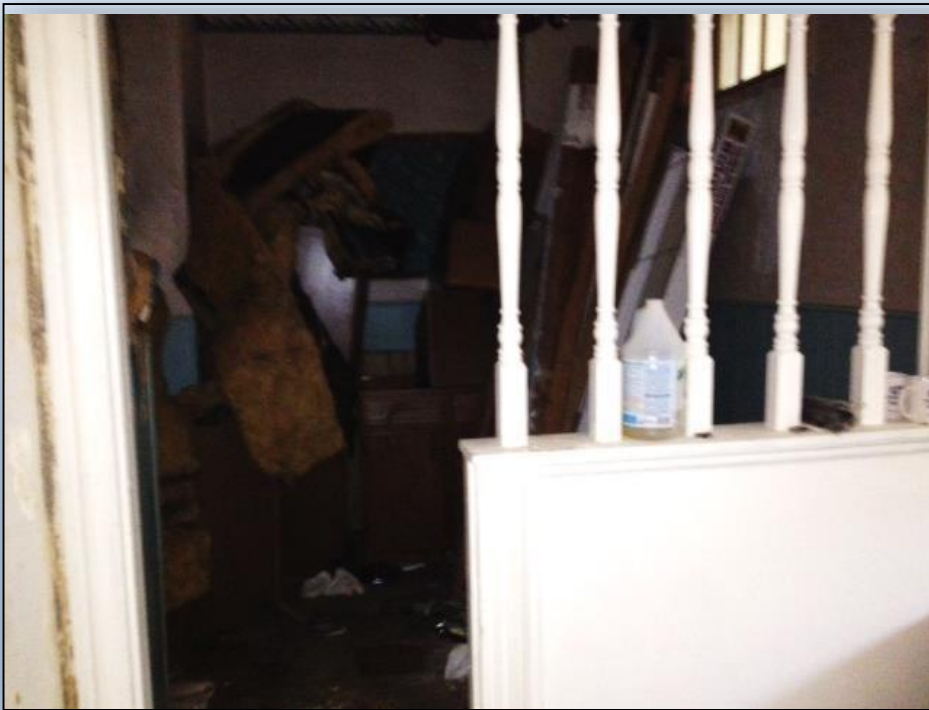
**After**



# Kitchen Suite 2

**Before**

**After**



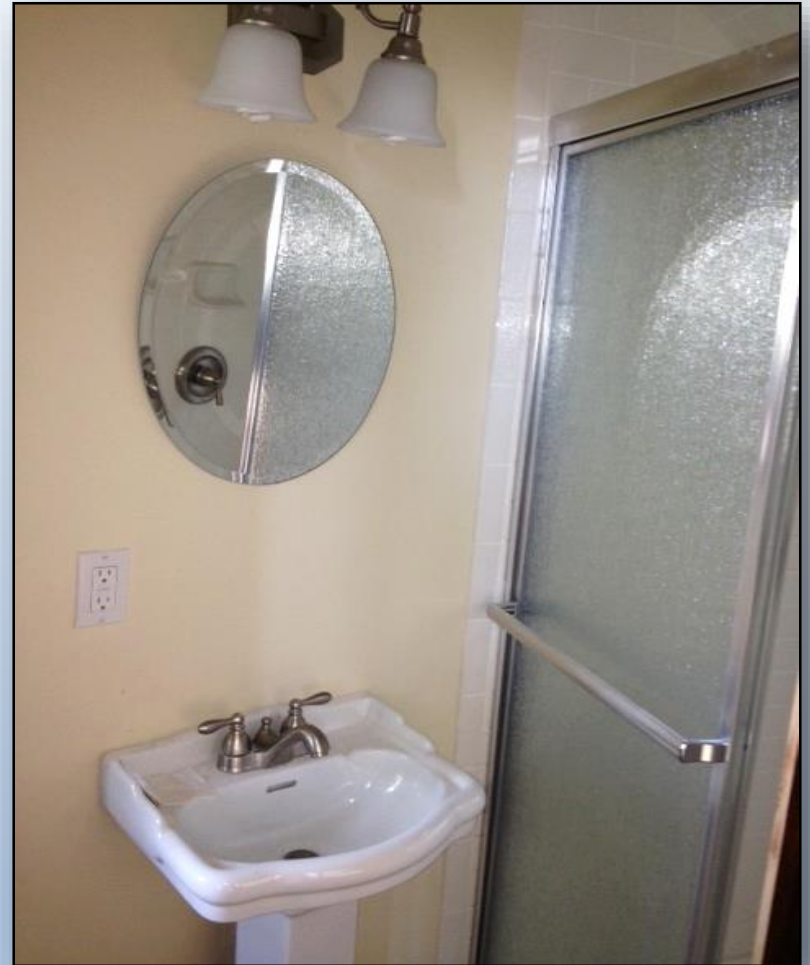


**Minus the vines that were growing into the house...**























# Suite 5

**Before**



**After**



# Before...



VictoriaElizabethBarnes.com

Stewardship and commitment to community so future generations may learn and appreciate our history...



# *Priceless*

