

GET DATA DETAILS. A group of Palmyra High School students, led by Barry Goldstein, teacher, at left, attended a course on data processing given recently at the Burlington County Vocational High School. In front row, from left, are Mary

Kueble, Karen Sidelko, Sandy Harrison, Rosemary Bistline and Kathy Godfrey. In back row, from left, are Walter Flginiak, Jack Beauchamp, Joanna Poe, James Rausch, Howard Dreby and Lillian Kueble.

'5-for-3' Race Highlights Poll For Delran Seats

DELTRAN -- Five candidates including incumbent Albert Mount, will vie next Tuesday for three three-year seats on the Delran Board of Education and two aspirants will contend for an unexpired two-year term of board member Clarence Joyce who will not seek reelection.

Board member Albert Mount, David Geary, William Haar, Mrs. Irene Kavel and Joseph Romanchik will wage a full scale contest for three full term seats.

Mrs. Elizabeth Davenny and Francis Fuoco will battle it out for a two-year unexpired term of board president Donald Anderson who will not seek reelection.

Voting will take place in the township's three schools from 5 to 9 p.m. Residents living in district 1 will vote at the Aaronson-Bell School; those living in districts 2, 5 and 6 will vote at the Chester School; voters living in district 3 and 4, will cast their ballot at the Cambridge School.

Voters will be asked to approve Current Expense of \$1,007,115 and Capital Outlay of \$55,856.76. A comparison of Current Expense of \$864,048, approved last year shows an increase of the same item in the new budget to be \$142,067. Last year's Capital Outlay was \$13,281 less than the 1967-68 appropriation.

(Continued on page 4)

12 Taxpayers Show Up At Riverton Hearing

Taxpayer interest in the 1967-68 Riverton school district budget was at a minimum with only 12 persons turning out for the public hearing on the operations estimate.

Following the hearing the board unanimously adopted the budget and then called a special meeting to act on other

school board matters.

Among these was a report from the teacher relations committee and the board reported it received a letter from the teachers accepting the school board salary offer.

As in the past, the board announced it will sponsor two boys for attendance at the N. J. Boys' State of Rutgers University, New Brunswick, next June.

Mrs. Jean Munro was granted permission by the board to use the school for the community - sponsored Arts and Crafts Summer Program, for a period of three weeks following the Fourth of July. The Tri-Boro Church Basketball League was also granted permission to use the auditorium for four Saturday mornings to complete its current schedule.

Arrangements were completed with the Delran Twp. School District to transport local pupils to the Bancroft School, Haddonfield. A contract was also voted for the employment of Richard W. Douglass as a guidance counselor. Douglass will report when he can leave his present post.

A policy was also adopted to refrain from closing Riverton School because of inclement weather, except under extreme conditions. The decision on closing on any day will be made by the chief administrator.

Ambulance Aide Tells Rotary of Unit's Activities

James Sullivan, of Palmyra, was one of the speakers at last week's regular Palmyra-Riverton Rotary Club meeting, representing the Palmyra Ambulance Association. He gave the Rotarians a brief description of this civic organization.

The ambulance association was originated in 1921 and has grown to the point where last year 1000 calls were made for its services. One to three hours are spent on each call with a minimum of two and sometimes three volunteers.

Two ambulances and a utility type truck, which can be used as an ambulance, are housed in the Palmyra Fire House although not part of the fire company. At its present rate of service, soon an additional ambulance will become necessary, Sullivan said.

The association is a civic non-profit organization. It is supported by financial assistance.

(Continued on page 4)

Cahill to Open Office Tomorrow

Congressman William T. Cahill, representative of the newly created Sixth District, will hold a formal opening of his new congressional office in Cherry Hill, tomorrow, Friday, from 4 to 6 p.m. The new office is located at 295 West Marlton Pike in the second floor of the Lenny Building.

Four Candidates, Budget Items On School Ballot

CINNAMINSON -- Four candidates have filed for a trio of three-year terms on the Cinnaminson Board of Education to be voted on at next Tuesday's elections.

The two incumbents, Mrs. Maude McCombs and William Hemphill, will be challenged by two newcomers, Mrs. Ruth Allen and Warren Lamont.

Voting will take place from 2 to 9 p.m. at two polling places. Residents living in districts 1 to 7 will vote at the Junior-Senior High School on Riverton rd. Residents living in districts 8 to 18 will vote at Memorial School, also on Riverton rd. Voters will be asked to approve three budget items on the ballot: transfer of \$69,500 to capital outlay from the current expense account; a current expense item of \$1,506,833, and capital outlay of \$68,700.

The board estimates the 1967-68 budget will raise the tax rate 22 cents per \$100 of assessed valuation. The figure is expected to be reduced however, with the increase of township rates. Current expenses voted on Feb. 14 will be \$25,104 less than last year when the 1966-67 appropriation included operational expenses for the recently opened New Albany School.

A new capital outlay appropriation of \$68,700 will show an increase of \$40,757 over last year when the figure was \$27,943.

Sports Stadium Support Urged By J. Chiaccio

RIVERSIDE -- Joseph Chiaccio, of 148 Webster St., Riverside, this week announced support of a sports stadium as proposed recently by the Mayor Bozarth of Delran Township.

Chiaccio, a Riverside businessman, said, "I would like to go on record supporting a sports stadium in Burlington County as proposed by Mr. Earle Bozarth, Mayor of Delran Township."

"I feel it would be a tremendous boost for sports in Burlington County. Our population is on a tremendous increase, when you consider Willingboro and Delran Township along with all the adjacent towns, cities and communities."

"It will represent many thousands of people within the next five years. We could well afford to finance and support such a venture," Chiaccio stated.

THE NEW ERA

Published weekly on Thursdays by

The Stevens Newspaper Co., Inc.

609 Main St., Riverton, N.J. 08077 Phone 829-0712

Eleanor R. Lorschbach, Editor

Subscription Rate \$2.50 Yearly in Advance

ENTERED AS SECOND CLASS MAIL MATTER JULY 1, 1966 AT THE POST OFFICE AT RIVERTON, N.J. UNDER THE ACT OF MARCH 3, 1879.

LEGAL ADVERTISING - The New Era is a legal advertising medium for Sheriff's Sales, Administrators and Executors' Notices, Ordinances and other legal announcements.

PRINTING - The New Era is equipped to do all kinds of Commercial Printing at reasonable prices.

Take a Second Look

Tuesday's snowstorm points up one important fact with relation to the annual mid-winter school district elections: it's a great gamble that the majority of voters, if they were so inclined, could get out to cast ballots in the elections, a complaint that has been voiced many times in the past and in many quarters.

While the storm may have no effect on next Tuesday's elections, it had a distinct effect on the turnout at the polls for regional high school district elections, most of which comprise huge areas and pose major travel problems when highways are clogged with snow and drifts.

Much is made of the fact that the bulk of taxpayers shrug their shoulders over the importance of school district election. But, it is nonetheless true that the impediments caused by snow, could be a deciding factor in the selection of candidates and the passage or rejection of school budget which face enough peril, even on good days.

There may be good reasons other than tradition for holding the school elections during the mid-winter months but they have very little soundness if the influence stormy weather can have on the democratic process is considered.

Some political experts even believe the November general elections are held too late in the season because in northern climes, early November can be like February here. Those who continually press for greater voter interest in school district elections would do well to have their legislators order complete and objective studies of the effects of weather on voting percentages in school elections. At present they are at a minimum, ranging from five to 10 per cent of those eligible to cast ballots—in good weather.

Boards of education could well be the leaders in any movement aimed at changing the date of their elections. They could, as well, point out that it would merely be a bookkeeping matter to switch budget voting from the February date to a more seasonal one. As it is, school boards project their costs over two calendar years under their present fiscal year budgeting policy.

The goal of holding elections, it would appear, is to get as many voters as possible to turn out at the polls. Conducting the elections at this time of year has the opposite effect.

A Local Problem

Everyone looks far afield for a solution to water pollution—in this instance to the state, an inter-state commission or the federal government, hopeful that they will either individually or collectively, come up with some magic formula to correct the condition.

Unfortunately, too many of those who live along the Delaware River banks and along the shores of its tributaries took the clear, cool water for granted and looked beyond the spoilers who cast waste into the streams and river.

Protection against stream pollution should have reached down to the local level, just as good planning for land use is now in the hands of local government. That, too, for many years went by unnoticed until development started on a scale never dreamed of in years past. Fortunately, indiscriminate use of land caught the eye of local government, as well as in the upper levels.

Control of water pollution went by unnoticed until it became a hazard and a menace that is still growing, although all are aware of its dangers and harmful effects.

The fact that all are aware of it, doesn't mean the danger is ended, especially for those who live along the shores of the polluted waters. Just as planning boards and zoning boards have a voice in the land use for protection of citizens, similar attention should be paid to the dangers of water pollution. Instead of shying the burden to the state and federal government, local authorities should set up rigid controls for their own protection and cooperate in every way possible in the cleanup.

PHS TO DINE

The annual banquet for the junior and senior classes of Palmyra High School will be held at the Hawaiian Cottage, Cherry Hill, Thursday evening, Feb. 9, according to Miss Ninette Bonanno, senior class advisor.



(Q) - We are dividing a large bedroom into 2 smaller bedrooms with a partition. Is it possible to use a wall material to insulate the wall so that noises originating in one room would not be heard in the other?

R.W. (A) - Complete absence of

Ambulance

(Continued from Page 1)

ance from the governing bodies of the Tri-Boro communities; by door-to-door fund raising and by donations. No fees are charged to any patient - they may donate if they choose.

Rotarian James Davidson presented Sullivan with the annual Rotary Club donation. Each year, as its major fund-raising project, the Palmyra Rotary Club sells tickets for a show at the Camden County Music Fair. The proceeds are distributed among local civic organizations such as the Ambulance Association.

The second speaker was Rev. Ralph Shockey, administrator of the Moorestown Lutheran Home, and a member of the Moorestown Rotary Club. Rev. Mr. Shockey spoke about the coming Rotary District conference to be held in Atlantic City, April 14 to 16. This is an inspirational gathering of about 70 Rotary Clubs in South Jersey and part of Delaware, where Rotarians review their work completed, make plans and organize for a new Rotary year.

Send questions to "Ask the Real Estate Broker," The New Era, 609 Main Street, Riverton, N.J. 08077. Names and addresses must be signed to letters which will be withheld if requested. The Editor reserves the right to withhold publication or to edit it.



Cinema In Review

THE PROFESSIONALS (Columbia)

The American western is undoubtedly one of Hollywood's greatest sources of entertainment. It has had a long and varied cinema history. In fact, the first movie with a plot was THE GREAT TRAIN ROBBERY (1903), filmed by the Edison Company in the "wilds" of New Jersey.

The western has come a long way since then. One immediately thinks of "The Virginian" (1929) or "Stagecoach" (1939) and certainly "The Ox-Bow Incident" (1940) and "High Noon" (1952). Stars like Gary Cooper and John Wayne were weened on the westerns and have always been associated with them.

The westerns of the '60s are best represented in John Sturges' "The Magnificent Seven" (1960) and Richard Brooks' "The Professionals" (1966).

"The Professionals" belongs to the tough, gritty school of survival and the fit test. It is a colorful melodrama laid in Mexico during the 1920's and concerns four soldiers of fortune who set

Ask Your Broker

By THOMAS W. MOGCK,
Licensed Real Estate Broker

sound is only possible in a complete vacuum. However, an effective sound barrier can be made by filling the wall cavity with a highly porous type insulation such as rock wool, fiber glass, or one of the vegetable types of insulation. Additional soundproofing can be accomplished by using highly porous types of wallboard which absorb and deaden a good deal of sound instead of plaster, drywall or other hard, dense sort of material.

(Q) - We are considering converting our attic, which is under a sloping roof, into a playroom for the children. Should we bring the new ceiling directly up to the roof peak or confine it to a certain height?

N.S. (A) - The normal headroom between finish floor and ceiling should be 6-1/2 feet. It should not be less than 6 feet and never built directly up to the roof peak. There should be a small dead-air space between the new ceiling and peak to allow for ventilation and to prevent condensation of water vapor on the house roof boards.

Send questions to "Ask the Real Estate Broker," The New Era, 609 Main Street, Riverton, N.J. 08077. Names and addresses must be signed to letters which will be withheld if requested. The Editor reserves the right to withhold publication or to edit it.

Educational List Latest Fare at Local Library

BURLINGTON -- The latest reading list prepared by the Burlington County Area Library for distribution to patrons is concerned with education.

The list is divided into general interest books, teacher education, higher education, and problems of desegregation and the disadvantaged.

A recently discovered work written in 1899 by the educational philosopher, John Dewey has been published under the title "Lectures in the Philosophy of Education."

Salon Kimball's Education and the New America is a re-examination of the state of education in the U. S. today.

For parents who are facing the dilemmas and confusions of today's changing curriculums there is Robert Wilson's "How To Guide Your Child's Education; Edward Edelson's "Parents' Guide To Science and Siegfried Englemann's "Give Your Child A Superior Mind."

Higher education reading suggests the Founding of American Colleges...W-4-H American Colleges...With Particular Reference To Religious Influences...By Donald Tewksbury; The Fulbright Program by Walter Johnson and comment by the new wave of college students on vital issues affecting America in David Malley's "Fermat on The Campus."

are considered in the reading list not as all socially handicapped because material for the physically or mentally disadvantaged is covered by such titles as "Housecraft in The Education of Handicapped Children" by L. DeWitt; "Through The Barriers Of Deafness And Isolation" by Boris Morokvin and Bernice Baumgartner's "Guiding The Retarded Child."

Education For Diversity by Elizabeth Wright presents a new approach to intergroup education while Margaret Anderson presents the effects on all southern children of desegregation, integration and Isolation in "Children of The South."

All the above titles are available for circulation and may be secured from the Burlington Headquarters, or by request from the Palmyra Branch, or the bookmobiles.

'5-for-3'

(Continued from Page 1)

tion to be voted on Feb. 14. In explaining the increase Mrs. Alberta Nicola, Board Secretary, said, "the budget went up so slight that the board expects a very slight raise in taxes. In actual taxation there is not too much difference since more surplus (\$50,000) is being used. Increased state aid reduces the amount to be raised by taxation," Mrs. Nicola said.

The photography by Conrad Hall is gorgeous and Maurice Jarre's musical score is fine. The cast, headed by Burt Lancaster, Lee Marvin, Robert Ryan, Woody Strode, Claudia Cardinale, and Jack Palance, is convincing. Lancaster and Marvin are especially good as a team. They handle their scenes with poker faces and ready wit.

Summing Up: Slam-bang, shoot-up-in fireworks in the grand tradition. The action film of the year.

Unexpired Term Featured Race In Riverton Boro

RIVERTON -- "No contest" appears in the making for election for three three-year terms on the Riverton Board of Education but three candidates will vie for the one-year unexpired term of Board President Harold Eaton who resigned in December.

Joseph Antonelli, John A. Lynch and K. Robert Lundstedt will each seek a three-year seat at Tuesday's school elections.

John H. Law, J. Edward Gilmore and James R. Whitmeyer will battle it out for the one-year unexpired term. Voting will take place between 5 and 9 p.m. at the Riverton School. The ballot will also include for approval: current expenses, \$287,912, and capital outlay, \$4,656.22, a total of \$292,568.

Incumbents Face Lone Opponent For Palmyra Bd.

PALMYRA -- Four candidates including three incumbents will fight to fill three vacancies on the Palmyra Board of Education at Tuesday's election.

Robert V. Cooper, vice president of the board, Mrs. Prickett will seek reelection. Willard W. Frank, Jr., will make a bid for a first term.

Voters will be asked to approve current expenses of \$498,986 and capital outlay of \$11,000. Last year voters approved current expenses of \$508,642. There was no capital outlay on the ballot in 1966.

Board Secretary Miss Marie L. McDermott said the school tax rate of \$2.21 resulting from last year's budget was further reduced by increased state aid and sales tax to \$1.76 per \$100 of assessed valuation.

The new budget to be voted on next Tuesday, will be seven cents less or about \$2.14 per \$100 assessed valuation.

Cinnaminson PAL To Register Boys, Girls Friday

CINNAMINSON -- Bill Tanguay, president of the Cinnaminson P.A.L. Association, announced this week registration dates for baseball and softball for the 1967 season. Registrations will begin on Feb. 10 and 12 from 7 to 9 p.m., and Feb. 11 and 18 from 10 a.m. to 2 p.m. at the Municipal building on Riverton road. Registration is open for township girls age 10 to 14 and boys age 8 to 16. The starting ages of both groups must be reached on or before Aug. 1, 1967.

Tanguay said that a registration fee of \$3.00 will remain unchanged. However, a \$1.00 registration fee per adult male family will be required to offset P.A.L.'s rising operational costs.

"The organization sponsored a recreation program for approximately 850 children. This year, the figure is expected to exceed 950," Tanguay said.

Also Mount Zion A.M.E. Church; Epworth Methodist Church; Moravian Church; Calvary Presbyterian Church; Covenant United Presbyterian Church; Asbury Methodist Church; Trinity A.M.E. Church; Westfield Friends Church and Bethany Lutheran Church.

The circle of prayer is widened this year to include the Roman Catholic Community. Women from the Protestant churches of the area will participate in the order of worship.



AMBULANCE HELPERS. Local Rotarian James Davidson, right, is showing handing a check for support of the Palmyra Ambulance Association to James Sullivan, a representative of the association. Funds for the contribution for the ambulance unit represent funds raised by the Rotarians during their benefit show at the Camden County Music Fair, Had-donfield.

'Guys and Dolls' Show on Program

The Sheila Kirschbaum Auxiliary for Retarded Children presents "Guys and Dolls on Broadway", a dinner-fash-ion show to be held at Ken-neys Suburban House, Wednesday, March 1 at 6:30 p.m. Women's fashions are by Florelle. Male fashions by Scott's Men store both of the Main Line Shopping Center, Cinnaminson.

Donation-\$4.50. For tickets contact Mrs. Iris Lebow, 829-7671.

16 Churches Set To Take Part in Day of Prayer

CINNAMINSON -- Sixteen area churches of all Christian faiths will participate 1:30 p.m. Friday in a World Day of Prayer sponsored by the United Church Women of the National Council of Churches in Cinnaminson this year.

The symposium will be held at the Covenant United Presbyterian Church at 2618 New Albany rd. A special meditation will be given by Sister M. Christopher Marie of the Sisters of Charity, from Sacred Heart Catholic Church, Riverton.

In addition to Sacred Heart, attending will be representatives from St. Charles Borromeo Catholic Church, Cinnaminson; Christ Episcopal Church of Palmyra; Christ Episcopal Church of Riverton; Central Baptist Church; St. Paul's Baptist Church; Evergreen Baptist Church.

Also Mount Zion A.M.E. Church; Epworth Methodist Church; Moravian Church; Calvary Presbyterian Church; Covenant United Presbyterian Church; Asbury Methodist Church; Trinity A.M.E. Church; Westfield Friends Church and Bethany Lutheran Church.

The circle of prayer is widened this year to include the Roman Catholic Community. Women from the Protestant churches of the area will participate in the order of worship.

ROGERS NEWS AGENCY

EAST BROAD STREET

PALMYRA

Offering You a Complete Selection of

Special Valentines for Special People



"When You Care Enough to Send the Very Best"



NEW STAFF MEMBER. Mrs. Margaret LeCrone joined the guidance staff of Palmyra High School recently. She is a recent graduate of Pennsylvania State University, and new resident of Palmyra.

3-Yr.-Old Feted At Birthday Party

CINNAMINSON -- Three-year-old Laure Ann, daughter of Mr. and Mrs. Philip Cipoletti, of 800 Willow dr., was feted last Tuesday afternoon at her home on the occasion of her third birthday, Jan. 31.

Guests included Joanne, Timmy and Suzanne Drum, Ronnie and Michael Parker, Donna and Alan Scott, Billy and Lisa Ship. Present also were the guest of honor's brothers Frankie and Danny; Mark and Joel Knox. Joel also celebrated

his third birthday Jan. 31 when his mother and Mrs. Cipoletti occupied the same hospital room.

COMMENT WAS OURS The editorial comment preceding the by-line report on the meeting of the Delaware River Commission was by the New Era staff, and not the author of the report, Mrs. Ruth Allen. Appearing under her by-line, it appeared mistakenly that she made the comment.

Have a Heart!

In conjunction with the Heart Drive the following Drug Stores will donate 10¢ to the Heart Fund for every box of Valentine's candy sold. (So have a heart and help a needy cause.)

CINNAMINSON DRUG STORE
Route 130 and Cinnaminson av.,
Cinnaminson

EBERLY'S DRUG STORE
211 E. Broad St., Palmyra

MILLSIDE PHARMACY
Haines-Mill Rd. & Route 130,
Riverside

ROSVOLD PHARMACY
New Albany Road & Route 130,
Cinnaminson

Honor Societies Hold Conference At Palmyra High

PALMYRA -- The Palmyra High School Honor Society was held at a conference of representatives from the honor societies of six Burlington County high schools.

The purpose of the conference was to discuss the possibility of having a society representing schools at the county level.

In lieu of a county society, it was decided that two conferences would be held each year. The next to be held at Rancocas Valley Regional High School in the fall.

Schools attending were John F. Kennedy High School, Will-

ingboro; Burlington High School; Burlington Regional High School; Burlington Township High School; Rancocas Valley Regional High School.

Doll Collection Program Highlight

CINNAMINSON -- Temple Sinai Sisterhood will hold their regular meeting Tuesday evening, Feb. 14, at 8:30 p.m. in the auditorium of their temple.

Mrs. Edward Kesslinger, program chairman, reports that Mrs. George Miller, of Philadelphia, will display her doll collection.

The theme for the program will be "Togetherness in Living," as illustrated by dolls of many nations.

Mrs. Miller's doll collection is over 35 years old and each of the 1100 dolls were presented as a gift to her.

She has been active in the Philadelphia area in various civic and social groups.

Mrs. Voss Heads Heart Assn.

Mrs. John Voss, of 709 Thomas av., Riverton, a long-time veteran of the Burlington County Heart Association and a well known leader in community activities, has accepted the chairmanship of Riverton for the 1967 Heart Fund campaign.

February has been proclaimed "Heart Month" by both President Johnson and Governor Hughes.

During the month-long campaign efforts will be made to reach everyone with educational material about the causes and prevention of heart disease.

As in past years, Mrs. Voss will be assisted by the Heart Team. Teenagers will call on everyone Heart Sunday, Feb. 19, to receive contributions.

PTA TO SEE FILM
Sacred Heart School Parent-Teacher Association, Riverton, will meet Thursday, Feb. 16, at 8 p.m., in the school auditorium, when the film, "The Parable," shown at the Protestant Pavilion at the World's Fair, will be screened.

Forster, Walter J. Handren, S. J. will be moderator of the discussion which will follow.

Palmyra GOP Club To Hear Greski, Freeholder Head

PALMYRA -- James M. Still, Jr., president of the Palmyra United Republican Club, today announced that Burlington County Freeholder Director Anthony F. Greski will be guest of honor and speaker at the club's next regular meeting.

The meeting will be held next Wednesday at Antoine Hall, 13 Broad st., beginning at 8:30 p.m.

Greski, who is beginning his fourth year as a freeholder, was elected director at the board's reorganization meeting in January. The Republicans hold a slim 3-2 majority on the board. It is, however, the first time they have had control in several years.

Still said Greski will discuss the board's plans and objectives for 1967. The freeholder head will also answer questions from the audience following his address.

Greski is a former mayor of Burlington, an office he held for 14 years. He is also vice president of the New Jersey Association of Freeholders and has been that group's spokesman on legislation regarding legal aid to indigents.

In the county government, Greski has responsibility for personnel, highways, bridges, engineering and civil defense.

"Tony Greski is a highly qualified office holder," Still stated, "and he has a reputation for being an excellent speaker."

Still invited all Palmyra Republicans and Independents and "open-minded Democrats" to attend the meeting. Refreshments will be served. Still also announced that the club is continuing its membership drive.

"Membership in the club can be obtained simply by sending \$1 for each member to John Y. Root, vice president, Palmyra United Republican Club, Box 104, Palmyra," Still explained.

He also continued, "A second method of becoming a member has been introduced by Jack Root this year. This new method, should make it even easier for those who have delayed on renewing or beginning their memberships."

"Simply call Root at 829-3815 or myself at 829-4336 and someone from the club will deliver the membership cards and pick up the dues."

"But the best way of joining still remains to attend the meetings."

Make Dean's List

CAMDEN -- Riverton and Cinnaminson students were among the 24 at Rutgers College of South Jersey whose academic excellence earned them places on the dean's list for the fall semester.

Dean W. Layton Hahn identified the four students as M. Kathleen McCrory, of 2100 Fernwood pl., a sophomore, and Patricia K. Muchewicz, of 2808 Waterford dr., a junior, both Cinnaminson, and David F. Lange, of 504 Main st., a sophomore, and Margaret M. Nieland, of Route 130, a senior, both Riverton.

D Roads and Bridges		E Charitable, Correctional		F Educational		G Unemployed		H Social Welfare		I Mental Health		J Public Health		K Sanitation		L Social Services		M Social Security		N Social Work		O Social Work		P Social Work		Q Social Work		R Social Work		S Social Work		T Social Work		U Social Work		V Social Work		W Social Work		X Social Work		Y Social Work		Z Social Work		AA Social Work		AB Social Work		AC Social Work		AD Social Work		AE Social Work		AF Social Work		AG Social Work		AH Social Work		AI Social Work		AJ Social Work		AK Social Work		AL Social Work		AM Social Work		AN Social Work		AO Social Work		AP Social Work		AQ Social Work		AR Social Work		AS Social Work		AT Social Work		AU Social Work		AV Social Work		AW Social Work		AX Social Work		AY Social Work		AZ Social Work		BA Social Work		BB Social Work		BC Social Work		BD Social Work		BE Social Work		BF Social Work		BG Social Work		BH Social Work		BI Social Work		BJ Social Work		BK Social Work		BL Social Work		BM Social Work		BN Social Work		BO Social Work		BP Social Work		BQ Social Work		BR Social Work		BS Social Work		BT Social Work		BU Social Work		BV Social Work		BW Social Work		BX Social Work		BY Social Work		BZ Social Work		CA Social Work		CB Social Work		CC Social Work		CD Social Work		CE Social Work		CF Social Work		CG Social Work		CH Social Work		CI Social Work		CJ Social Work		CK Social Work		CL Social Work		CM Social Work		CN Social Work		CO Social Work		CP Social Work		CQ Social Work		CR Social Work		CS Social Work		CT Social Work		CU Social Work		CV Social Work		CW Social Work		CX Social Work		CY Social Work		CZ Social Work		DA Social Work		DB Social Work		DC Social Work		DD Social Work		DE Social Work		DF Social Work		DG Social Work		DH Social Work		DI Social Work		DJ Social Work		DK Social Work		DL Social Work		DM Social Work		DN Social Work		DO Social Work		DP Social Work		DQ Social Work		DR Social Work		DS Social Work		DT Social Work		DU Social Work		DV Social Work		DW Social Work		DX Social Work		DY Social Work		DZ Social Work		EA Social Work		EB Social Work		EC Social Work		ED Social Work		EE Social Work		EF Social Work		EG Social Work		EH Social Work		EI Social Work		EJ Social Work		EK Social Work		EL Social Work		EM Social Work		EN Social Work		EO Social Work		EP Social Work		EQ Social Work		ER Social Work		ES Social Work		ET Social Work		EU Social Work		EV Social Work		EW Social Work		EX Social Work		EY Social Work		EZ Social Work		FA Social Work		FB Social Work		FC Social Work		FD Social Work		FE Social Work		FF Social Work		FG Social Work		FH Social Work		FI Social Work		FJ Social Work		FK Social Work		FL Social Work		FM Social Work		FN Social Work		FO Social Work		FP Social Work		FQ Social Work		FR Social Work		FS Social Work		FT Social Work		FU Social Work		FV Social Work		FW Social Work		FX Social Work		FY Social Work		FZ Social Work		GA Social Work		GB Social Work		GC Social Work		GD Social Work		GE Social Work		GF Social Work		GG Social Work		GH Social Work		GI Social Work		GJ Social Work		GK Social Work		GL Social Work		GM Social Work		GN Social Work		GO Social Work		GP Social Work		GQ Social Work		GR Social Work		GS Social Work		GT Social Work		GU Social Work		GV Social Work		GW Social Work		GX Social Work		GY Social Work		GZ Social Work		HA Social Work		HB Social Work		HC Social Work		HD Social Work		HE Social Work		HF Social Work		HG Social Work		HH Social Work		HI Social Work		HJ Social Work		HK Social Work		HL Social Work		HM Social Work		HN Social Work		HO Social Work		HP Social Work		HQ Social Work		HR Social Work		HS Social Work		HT Social Work		HU Social Work		HV Social Work		HW Social Work		HX Social Work		HY Social Work		HZ Social Work		IA Social Work		IB Social Work		IC Social Work		ID Social Work		IE Social Work		IF Social Work		IG Social Work		IH Social Work		II Social Work		IJ Social Work		IK Social Work		IL Social Work		IM Social Work		IN Social Work		IO Social Work		IP Social Work		IQ Social Work		IR Social Work		IS Social Work		IT Social Work		IU Social Work		IV Social Work		IW Social Work		IX Social Work		IY Social Work		IZ Social Work		JA Social Work		JB Social Work		JC Social Work		JD Social Work		JE Social Work		JF Social Work		JG Social Work		JH Social Work		JI Social Work		JJ Social Work		JK Social Work		JL Social Work		JM Social Work		JN Social Work		JO Social Work		JP Social Work		JQ Social Work		JR Social Work		JS Social Work		JT Social Work		JU Social Work		JV Social Work		JW Social Work		JX Social Work		JY Social Work		JZ Social Work		KA Social Work		KB Social Work		KC Social Work		KD Social Work		KE Social Work		KF Social Work		KG Social Work		KH Social Work		KI Social Work		KJ Social Work		KL Social Work		KM Social Work		KN Social Work		KO Social Work		KP Social Work		KQ Social Work		KR Social Work		KS Social Work		KT Social Work		KU Social Work		KV Social Work		KW Social Work		KX Social Work		KY Social Work		KZ Social Work		LA Social Work		LB Social Work		LC Social Work		LD Social Work		LE Social Work		LF Social Work		LG Social Work		LH Social Work		LI Social Work		LJ Social Work		LK Social Work		LM Social Work		LN Social Work		LO Social Work		LP Social Work		LQ Social Work		LR Social Work		LS Social Work		LT Social Work		LU Social Work		LV Social Work		LW Social Work		LX Social Work		LY Social Work		LZ Social Work		MA Social Work		MB Social Work		MC Social Work		MD Social Work		ME Social Work		MF Social Work		MG Social Work		MH Social Work		MI Social Work		MJ Social Work		MK Social Work		ML Social Work		MM Social Work		MN Social Work		MO Social Work		MP Social Work		MQ Social Work		MR Social Work		MS Social Work		MT Social Work		MU Social Work		MV Social Work		MW Social Work		MX Social Work		MY Social Work		MZ Social Work		NA Social Work		NB Social Work		NC Social Work		ND Social Work		NE Social Work		NF Social Work		NG Social Work		NH Social Work		NI Social Work		NJ Social Work		NK Social Work		NL Social Work		NM Social Work		NN Social Work		NO Social Work		NP Social Work		NQ Social Work		NR Social Work		NS Social Work		NT Social Work		NU Social Work		NV Social Work		NW Social Work		NX Social Work		NY Social Work		NZ Social Work		OA Social Work		OB Social Work		OC Social Work		OD Social Work		OE Social Work		OF Social Work		OG Social Work		OH Social Work		OI Social Work		OJ Social Work		OK Social Work		OL Social Work		OM Social Work		ON Social Work		OO Social Work		OP Social Work		OQ Social Work		OR Social Work		OS Social Work		OT Social Work		OU Social Work		OV Social Work		OW Social Work		OX Social Work		OY Social Work		OZ Social Work		PA Social Work		PB Social Work		PC Social Work		PD Social Work		PE Social Work		PF Social Work		PG Social Work		PH Social Work		PI Social Work		PJ Social Work		PK Social Work		PL Social Work		PM Social Work		PN Social Work		PO Social Work		PP Social Work		PQ Social Work		PR Social Work		PS Social Work		PT Social Work		PU Social Work		PV Social Work		PW Social Work		PX Social Work		PY Social Work		PZ Social Work		QA Social Work		QB Social Work		QC Social Work		QD Social Work		QE Social Work		QF Social Work		QG Social Work		QH Social Work		QI Social Work		QJ Social Work		QK Social Work		QL Social Work		QM Social Work		QN Social Work		QO Social Work		QP Social Work		QQ Social Work		QR Social Work		QS Social Work		QT Social Work		QU Social Work		QV Social Work		QW Social Work		QX Social Work		QY Social Work		QZ Social Work		RA Social Work		RB Social Work		RC Social Work		RD Social Work		RE Social Work		RF Social Work		RG Social Work		RH Social Work		RI Social Work		RJ Social Work		RK Social Work		RL Social Work		RM Social Work		RN Social Work		RO Social Work		RP Social Work		RQ Social Work		RR Social Work		RS Social Work		RT Social Work		RU Social Work		RV Social Work		RW Social Work		RX Social Work		RY Social Work		RZ Social Work		SA Social Work		SB Social Work		SC Social Work		SD Social Work		SE Social Work		SF Social Work		SG Social Work		SH Social Work		SI Social Work		SJ Social Work		SK Social Work		SL Social Work		SM Social Work		SN Social Work		SO Social Work		SP Social Work		SQ Social Work		SR Social Work		SS Social Work		ST Social Work		SU Social Work		SV Social Work		SW Social Work		SX Social Work		SY Social Work		SZ Social Work		TA Social Work		TB Social Work		TC Social Work		TD Social Work		TE Social Work		TF Social Work		TG Social Work		TH Social Work		TI Social Work		TJ Social Work		TK Social Work		TL Social Work		TM Social Work		TN Social Work		TO Social Work		TP Social Work		TQ Social Work		TR Social Work		TS Social Work		TT Social Work		TU Social Work		TV Social Work		TW Social Work		TX Social Work		TY Social Work		TZ Social Work		UA Social Work		UB Social Work		UC Social Work		UD Social Work		UE Social Work		UF Social Work		UG Social Work		UH Social Work		UI Social Work		UJ Social Work		UK Social Work		UL Social Work		UM Social Work		UN Social Work		UO Social Work		UP Social Work		UQ Social Work		UR Social Work		US Social Work		UT Social Work		UU Social Work		UV Social Work		UW Social Work		UX Social Work		UY Social Work		UZ Social Work		VA Social Work		VB Social Work		VC Social Work		VD Social Work		VE Social Work		VF Social Work		VG Social Work		VH Social Work		VI Social Work		VJ Social Work		VK Social Work		VL Social Work		VM Social Work		VN Social Work		VO Social Work		VP Social Work		VQ Social Work		VR Social Work		VS Social Work		VT Social Work		VU Social Work		VV Social Work		VW Social Work		VX Social Work		VY Social Work		VZ Social Work		WA Social Work		WB Social Work		WC Social Work		WD Social Work		WE Social Work		WF Social Work		WG Social Work		WH Social Work		WI Social Work		WJ Social Work		WK Social Work		WL Social Work		WM Social Work		WN Social Work		WO Social Work		WP Social Work		WQ Social Work		WR Social Work		WS Social Work		WT Social Work		WU Social Work		WV Social Work		WW Social Work		WX Social Work		WY Social Work		WZ Social Work		XA Social Work		XB Social Work		XC Social Work		XD Social Work		XE Social Work		XF Social Work		XG Social Work		XH Social Work		XI Social Work		XJ Social Work		XK Social Work		XL Social Work		XM Social Work		XN Social Work		XO Social Work		XP Social Work		XQ Social Work		XR Social Work		XS Social Work		XT Social Work		XU Social Work		XV Social Work		XW Social Work		XX Social Work		XY Social Work		XZ Social Work		YA Social Work		YB Social Work		YC Social Work		YD Social Work		YE Social Work		YF Social Work		YG Social Work		YH Social Work		YI Social Work		YJ Social Work		YK Social Work		YL Social Work		YM Social Work		YN Social Work		YO Social Work		YP Social Work		YQ Social Work		YR Social Work		YS Social Work		YT Social Work		YU Social Work		YV Social Work		YW Social Work		YX Social Work		YY Social Work		YZ Social Work		ZA Social Work		ZB Social Work		ZC Social Work		ZD Social Work		ZE Social Work		ZF Social Work		ZG Social Work		ZH Social Work		ZI Social Work		ZJ Social Work		ZK Social Work		ZL Social Work		ZM Social Work		ZN Social Work		ZO Social Work		ZP Social Work		ZQ Social Work		ZR Social Work		ZS Social Work		ZT Social Work		ZU Social Work		ZV Social Work		ZW Social Work		ZX Social Work		ZY Social Work		ZZ Social Work	
---------------------	--	----------------------------	--	---------------	--	--------------	--	------------------	--	-----------------	--	-----------------	--	--------------	--	-------------------	--	-------------------	--	---------------	--	---------------	--	---------------	--	---------------	--	---------------	--	---------------	--	---------------	--	---------------	--	---------------	--	---------------	--	---------------	--	---------------	--	---------------	--	----------------	--	----------------	--	----------------	--	----------------	--	----------------	--	----------------	--	----------------	--	----------------	--	----------------	--	----------------	--	----------------	--	----------------	--	----------------	--	----------------	--	----------------	--	----------------	--	----------------	--	----------------	--	----------------	--	----------------	--	----------------	--	----------------	--	----------------	--	----------------	--	----------------	--	----------------	--	----------------	--	----------------	--	----------------	--	----------------	--	----------------	--	----------------	--	----------------	--	----------------	--	----------------	--	----------------	--	----------------	--	----------------	--	----------------	--	----------------	--	----------------	--	----------------	--	----------------	--	----------------	--	----------------	--	----------------	--	----------------	--	----------------	--	----------------	--	----------------	--	----------------	--	----------------	--	----------------	--	----------------	--	----------------	--	----------------	--	----------------	--	----------------	--	----------------	--	----------------	--	----------------	--	----------------	--	----------------	--	----------------	--	----------------	--	----------------	--	----------------	--	----------------	--	----------------	--	----------------	--	----------------	--	----------------	--	----------------	--	----------------	--	----------------	--	----------------	--	----------------	--	----------------	--	----------------	--	----------------	--	----------------	--	----------------	--	----------------	--	----------------	--	----------------	--	----------------	--	----------------	--	----------------	--	----------------	--	----------------	--	----------------	--	----------------	--	----------------	--	----------------	--	----------------	--	----------------	--	----------------	--	----------------	--	----------------	--	----------------	--	----------------	--	----------------	--	----------------	--	----------------	--	----------------	--	----------------	--	----------------	--	----------------	--	----------------	--	----------------	--	----------------	--	----------------	--	----------------	--	----------------	--	----------------	--	----------------	--	----------------	--	----------------	--	----------------	--	----------------	--	----------------	--	----------------	--	----------------	--	----------------	--	----------------	--	----------------	--	----------------	--	----------------	--	----------------	--	----------------	--	----------------	--	----------------	--	----------------	--	----------------	--	----------------	--	----------------	--	----------------	--	----------------	--	----------------	--	----------------	--	----------------	--	----------------	--	----------------	--	----------------	--	----------------	--	----------------	--	----------------	--	----------------	--	----------------	--	----------------	--	----------------	--	----------------	--	----------------	--	----------------	--	----------------	--	----------------	--	----------------	--	----------------	--	----------------	--	----------------	--	----------------	--	----------------	--	----------------	--	----------------	--	----------------	--	----------------	--	----------------	--	----------------	--	----------------	--	----------------	--	----------------	--	----------------	--	----------------	--	----------------	--	----------------	--	----------------	--	----------------	--	----------------	--	----------------	--	----------------	--	----------------	--	----------------	--	----------------	--	----------------	--	----------------	--	----------------	--	----------------	--	----------------	--	----------------	--	----------------	--	----------------	--	----------------	--	----------------	--	----------------	--	----------------	--	----------------	--	----------------	--	----------------	--	----------------	--	----------------	--	----------------	--	----------------	--	----------------	--	----------------	--	----------------	--	----------------	--	----------------	--	----------------	--	----------------	--	----------------	--	----------------	--	----------------	--	----------------	--	----------------	--	----------------	--	----------------	--	----------------	--	----------------	--	----------------	--	----------------	--	----------------	--	----------------	--	----------------	--	----------------	--	----------------	--	----------------	--	----------------	--	----------------	--	----------------	--	----------------	--	----------------	--	----------------	--	----------------	--	----------------	--	----------------	--	----------------	--	----------------	--	----------------	--	----------------	--	----------------	--	----------------	--	----------------	--	----------------	--	----------------	--	----------------	--	----------------	--	----------------	--	----------------	--	----------------	--	----------------	--	----------------	--	----------------	--	----------------	--	----------------	--	----------------	--	----------------	--	----------------	--	----------------	--	----------------	--	----------------	--	----------------	--	----------------	--	----------------	--	----------------	--	----------------	--	----------------	--	----------------	--	----------------	--	----------------	--	----------------	--	----------------	--	----------------	--	----------------	--	----------------	--	----------------	--	----------------	--	----------------	--	----------------	--	----------------	--	----------------	--	----------------	--	----------------	--	----------------	--	----------------	--	----------------	--	----------------	--	----------------	--	----------------	--	----------------	--	----------------	--	----------------	--	----------------	--	----------------	--	----------------	--	----------------	--	----------------	--	----------------	--	----------------	--	----------------	--	----------------	--	----------------	--	----------------	--	----------------	--	----------------	--	----------------	--	----------------	--	----------------	--	----------------	--	----------------	--	----------------	--	----------------	--	----------------	--	----------------	--	----------------	--	----------------	--	----------------	--	----------------	--	----------------	--	----------------	--	----------------	--	----------------	--	----------------	--	----------------	--	----------------	--	----------------	--	----------------	--	----------------	--	----------------	--	----------------	--	----------------	--	----------------	--	----------------	--	----------------	--	----------------	--	----------------	--	----------------	--	----------------	--	----------------	--	----------------	--	----------------	--	----------------	--	----------------	--	----------------	--	----------------	--	----------------	--	----------------	--	----------------	--	----------------	--	----------------	--	----------------	--	----------------	--	----------------	--	----------------	--	----------------	--	----------------	--	----------------	--	----------------	--	----------------	--	----------------	--	----------------	--	----------------	--	----------------	--	----------------	--	----------------	--	----------------	--	----------------	--	----------------	--	----------------	--	----------------	--	----------------	--	----------------	--	----------------	--	----------------	--	----------------	--	----------------	--	----------------	--	----------------	--	----------------	--	----------------	--	----------------	--	----------------	--	----------------	--	----------------	--	----------------	--	----------------	--	----------------	--	----------------	--	----------------	--	----------------	--	----------------	--	----------------	--	----------------	--	----------------	--	----------------	--	----------------	--	----------------	--	----------------	--	----------------	--	----------------	--	----------------	--	----------------	--	----------------	--	----------------	--	----------------	--	----------------	--	----------------	--	----------------	--	----------------	--	----------------	--	----------------	--	----------------	--	----------------	--	----------------	--	----------------	--	----------------	--	----------------	--	----------------	--	----------------	--	----------------	--	----------------	--	----------------	--	----------------	--	----------------	--	----------------	--	----------------	--	----------------	--	----------------	--	----------------	--	----------------	--	----------------	--	----------------	--	----------------	--	----------------	--	----------------	--	----------------	--	----------------	--	----------------	--	----------------	--	----------------	--	----------------	--	----------------	--	----------------	--	----------------	--	----------------	--	----------------	--	----------------	--	----------------	--	----------------	--	----------------	--	----------------	--	----------------	--	----------------	--	----------------	--	----------------	--	----------------	--	----------------	--	----------------	--	----------------	--	----------------	--	----------------	--	----------------	--	----------------	--	----------------	--	----------------	--	----------------	--	----------------	--	----------------	--	----------------	--	----------------	--	----------------	--	----------------	--	----------------	--	----------------	--	----------------	--	----------------	--	----------------	--	----------------	--	----------------	--	----------------	--	----------------	--	----------------	--	----------------	--	----------------	--	----------------	--	----------------	--	----------------	--	----------------	--	----------------	--	----------------	--	----------------	--	----------------	--	----------------	--	----------------	--	----------------	--	----------------	--	----------------	--	----------------	--	----------------	--	----------------	--	----------------	--	----------------	--	----------------	--	----------------	--	----------------	--	----------------	--	----------------	--	----------------	--	----------------	--	----------------	--	----------------	--	----------------	--	----------------	--	----------------	--	----------------	--	----------------	--	----------------	--	----------------	--	----------------	--	----------------	--	----------------	--	----------------	--	----------------	--	----------------	--	----------------	--	----------------	--	----------------	--	----------------	--	----------------	--	----------------	--	----------------	--	----------------	--	----------------	--	----------------	--	----------------	--	----------------	--	----------------	--	----------------	--	----------------	--	----------------	--	----------------	--	----------------	--	----------------	--	----------------	--	----------------	--	----------------	--	----------------	--	----------------	--	----------------	--	----------------	--	----------------	--	----------------	--	----------------	--	----------------	--	----------------	--	----------------	--	----------------	--	----------------	--	----------------	--	----------------	--	----------------	--	----------------	--	----------------	--	----------------	--	----------------	--	----------------	--	----------------	--	----------------	--	----------------	--	----------------	--	----------------	--	----------------	--	----------------	--	----------------	--	----------------	--	----------------	--	----------------	--	----------------	--	----------------	--	----------------	--	----------------	--	----------------	--	----------------	--	----------------	--	----------------	--	----------------	--	----------------	--	----------------	--	----------------	--	----------------	--	----------------	--	----------------	--	----------------	--	----------------	--	----------------	--	----------------	--	----------------	--	----------------	--	----------------	--	----------------	--	----------------	--	----------------	--	----------------	--	----------------	--	----------------	--	----------------	--	----------------	--	----------------	--	----------------	--	----------------	--	----------------	--	----------------	--	----------------	--	----------------	--	----------------	--	----------------	--	----------------	--	----------------	--	----------------	--	----------------	--	----------------	--	----------------	--	----------------	--	----------------	--	----------------	--	----------------	--	----------------	--	----------------	--	----------------	--	----------------	--	----------------	--	----------------	--	----------------	--	----------------	--	----------------	--	----------------	--	----------------	--	----------------	--	----------------	--	----------------	--	----------------	--	----------------	--	----------------	--	----------------	--	----------------	--	----------------	--	----------------	--	----------------	--	----------------	--	----------------	--	----------------	--	----------------	--	----------------	--	----------------	--	----------------	--	----------------	--	----------------	--	----------------	--	----------------	--	----------------	--	----------------	--	----------------	--	----------------	--	----------------	--	----------------	--	----------------	--	----------------	--	----------------	--	----------------	--	----------------	--	----------------	--	----------------	--	----------------	--	----------------	--	----------------	--

CLASSIFIED IS FOR



IF YOU BUY, SELL, TRADE, HIRE OR RENT

You Get The Best...

Classified Adv. Results--- in The New Era and Cinnaminson Era

Here's The Reason....

Every copy of both newspapers is MAILED --- directly to the home of their readers.

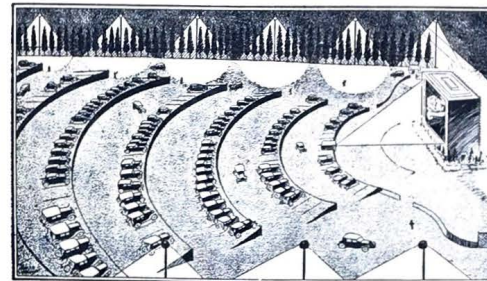
Your low-cost advertisement reaches 15,000 readers!

You Just Can't Buy Better Results

Try a "Classified Ad" and see for yourself.

Call 829-0712 or 829-0721

Watch the Movies From Your Auto



Cross Section, Showing Method of Placing Cars

An artist's conception of the first automobile movie theatre in the world, the Drive-in Theatre, located on the Admiral Wilson Boulevard near Central Airport, in Camden, invented by Richard M. Hollingshead, Jr., of Riverton. It will be open to the public early next month. Motor cars are virtually transformed into private boxes making it possible for motorists and their guests to see and hear the movies without leaving their cars. They are permitted to smoke, chat or even partake of refreshments. The Camden Drive-in Theatre occupies a space approximately 250,000 square feet. Above a cross section view showing two of the seven rows.



MISS EDITH S. COALE

Of Riverton, president of the Board of Managers of the Cinnaminson Home, who with Mrs. Harry F. Jones, also of Riverton, is arranging the annual fete and supper for the benefit of the home, to be held on Saturday, at Cinnaminson.

OBITUARIES

MRS. SARAH L. JONES

Mrs. Sarah L. Jones, widow of the late William H. Jones, of Thomas avenue, Riverton, died Tuesday. Funeral services will be held Friday afternoon at two o'clock at the Snover Funeral Home with Rev. Ira S. Pinn officiating. Interment will be made in the Asbury M. E. Cemetery. Mrs. Jones is survived by a son, Wilbur.

MRS. SUSANNA HAUSER

Mrs. Susanna Hauser, 65 years old, for many years a resident of Palmyra, died at her home, 603 West Sixth street, very suddenly Friday evening. Funeral services were held Tuesday afternoon at two o'clock, and entombment was made in the Arlington Mausoleum with Frank A. Snover in charge. The Rev. Harold L. Croger officiated at the service. Mrs. Hauser is survived by her

SPRING FESTIVAL AT WESTFIELD

Children of Friends' School Will Enact Play, "The Wishing Well"

The children of the Westfield Friends' School will hold their annual Spring festival on Friday, May 26, at 5 p.m. Although the time has been changed to the late afternoon, the play will be enacted, as usual, on the school's outdoor stage.

This year the story of "The Wishing Well" will be presented. The happy villagers of Cranbury Creek meet on the green every evening after supper. They have but one worry—their beloved King Nicholas has

the sneezes. Every time the Princess gets angry, the Queen shakes the King and the King sneezes. The word has gone out that anyone who can cure the King of this malady will not only be made Prince but will receive half of the kingdom. Max Lockfoot, a ragged lad, stops by the wishing well, from which appears Water Lily who persuades him to give her his last three pennies in return for which she grants him three wishes. The following morning Princess Lucy discovers Max by the well and they become friends. However, he is sorely hurt when she laughs at his tattered garments. Making use of his three wishes Max gets food and clothing, makes everybody happy, and proves himself a man of his word. Through his influence Princess Lucy nevermore becomes angry, the Queen need not shake the King, and the King is cured of his sneezes.

SCENE I—Evening on the Village Green

The Caretakers of the Green—Thomas Key, Cranston Smith
The Fiddlers—Jack McVaugh, Thomas Parry, Kenneth Thomason
The Villagers—Charlotte Durbrow, Katherine Chalmers, Marjorie Jessup, Jeanne Leach, Liliane Marshall, Helen Conard Porter, Maria Randall, Margaret Taylor, Helen Walburn, Nannie Willis, Elizabeth Anne Ziegler, Margaret Anna Ziegler.

The Princess—Helen Borer
The Bakers—David Blyler, Walter Drew, Clement Lewis, Howard Parry
The Tailors—Roy Gideon, Bernard Coe, David Robbins, Fowler Williams
The Village Children—
Rope Skippers—Elizabeth Dunn, Joan Entwistle, Eleanor Voorhis
Ballroom Girls—Cynthia Carpenter, Alice Elie, Catherine Gideon, Maylon Kieckhefer, Clara Moody, Ann Windsor Nevin, Mary Roberts, Sylvia Ann Willis.

Hoop Rollers—Mary Elizabeth Cashion, William Dunn, Frederick Village Boys—Biddle Atlee, John Douglas Clark, Michael Clark, George Conover, Harold Funk, Roy Heiser, Mark Hoepfner, Richard Hollerith, James Marshall, David Pittinger, Alexander Porter, Calvin Robbins, Henry Smith.

The Watchman—Robert Haley
The King—Perot Nevin
The Queen—Mary Whitner Rogers
The Pages—Emory Lealocky, Gorham Sargent
The Candle Children—Joan Bailey, Ruth Coe, Harvey Hirst, Dorothy Mae West, Mark, Richard Robbins, June Rodman, Allen Roberts, William West.
Max Lockfoot—Robert Stover
Water Lily—Mary Funk

SCENE II—Morning on the Village Green

husband, August Hauser, and a daughter, Mrs. Alice Dimond.

MRS. ELLA GARFIELD

Mrs. Ella Garfield, colored, died at her home, 206 Market street, Palmyra, Sunday. She had resided in Palmyra for about twenty-five years. Funeral services were held Wednesday at two o'clock and interment was made in the Wrightsville Cemetery, under the direction of Frank A. Snover.

What's become of the old-fashioned housewife who used to sit hard-boiled eggs over her spinach?

HAPPY THOUGH MARRIED
"You say you never clash with your wife?"
"Never. She goes her way and I go hers."

Caution

Sergeant: "Did you catch that car?"
Operator of Patrol Car: "No, sir. We chased it until our speedometer showed we had gone 500 miles this month since changing oil, so we had to stop and drain the crank case."

Cheer up, folks. The zoo-keepers say that ten years is the maximum life span for a wolf.

CLEAN YOUR FURNACE—NOW

and

SAVE ON FUEL NEXT WINTER

WE ARE EQUIPPED WITH THE MOST MODERN ELECTRIC VACUUM CLEANING APPARATUS FOR HEATING SYSTEMS

Dust and soot carry germs, hold moisture and rust pipes, soil clothing and furnishings as well as retard the efficiency of your furnace.

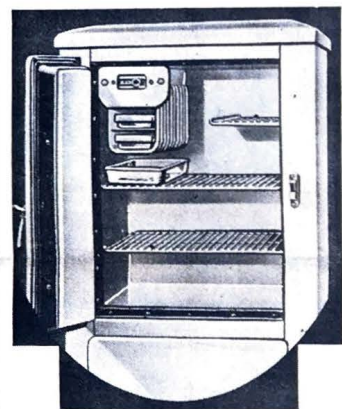
OUR JOB OF HEATER CLEANING IS NOT JUST A "LICK AND A PROMISE" BUT A REAL CAREFUL, WELL EXECUTED PLAN FOR SOOT REMOVAL AND HEATER PRESERVATION

ASK NOW FOR PRICE

GEORGE FRIDAY, Jr.

Plumbing—Heating—Roofing
609 Thomas Avenue Phone 937 Riverton

\$1.00 RYTEX STATIONERY—THE NEW ERA



You Can Buy an Excellent Kelvinator for \$99

There is a standard Kelvinator model at this price. It has all the regular Kelvinator features—three different temperatures—one for food storage and two for making ice cubes and frozen desserts. In the roomy storage compartment the temperature never goes above fifty degrees.

Kelvinator saves you money. You can help to pay for it by purchasing in larger quantities and by using leftovers. It is easy to do this when you have a Kelvinator because the dry cold keeps foods fresh and tasty for days.

A book "Cooking with Cold" is given away free. It tells you how to make delicious dishes in the Kelvinator. Come to the store and we will give you a copy or one will be mailed you on request.

Kelvinators are sold on the easy payment plan at a small increase over the cash prices—a small sum down and twenty-four months to complete payments.

There is a Kelvinator for every domestic and commercial purpose.

PUBLIC SERVICE

Romanchik Seeks Delran Seat

DEL-RAN -- Joseph Romanchik, of 20 Cornell dr., Millside Heights, is a graduate of the University of Scranton where he received his B.S. degree in Psychology. He is also a graduate of Glassboro State College with a Master's degree in Education.

He is a member of several educational organizations on the national, state and local levels and is presently employed by the Burlington City Board of Education as a mathematics and science instructor.

"I, like many citizens of Delran," Romanchik said, "am concerned about the welfare of my community. Thomas Jefferson once said, 'What service can we ever render to our country except to promoting education.' I share this vision completely and feel that the township of Delran can do nothing more than to provide the best educational opportunities for all its children. Education should



JOSEPH ROMANCHIK be Delran's first responsibility. Education should be everyone's business. "My concern in this regard is a very personal one. Having been involved for the

past eight years with Delran's growing needs as an educator, I have acquired a realistic understanding of our schools', students', and teachers' needs. I have been involved with both the legislative and educational sides of important issues.

"If I should be successful in serving the citizens of Delran as a Board member, then our school doors will clearly be marked; a good education is the only guarantee for a good future for all of us."

Stock Executive On Club Agenda

CINNAMINSON -- An account executive will be the guest speaker at the Cinnaminson Woman's Club Wednesday, Feb. 15 when they meet at the Palmyra Savings and Loan Building, Route 130. Robert E. Pearson, representative of Merrill Lynch, Pierce, Fenner and Smith of Trenton, will speak

Phila. Jesters To Play Faculty At Cinnaminson

The famous Philadelphia Jesters comedy basketball team will make its appearance in this area on Monday, Feb. 20, in a benefit basketball game sponsored by the Cinnaminson Teachers' Association to be held in the high school gym.

The Jesters will oppose the highly touted Cinnaminson Faculty and the main game will start at 8 p.m. Proceeds from the game will benefit the Cinnaminson Teachers' Association Scholarship Fund.

The Philadelphia Jesters aggregation is rated as one of the top three comedy basketball teams in the Nation and the Quaker City squad features the comedy antics of Bill "Bozo" Walker who immediately becomes a big favorite with the fans wherever he appears. Bozo couples excellent ball handling with comedy routines that are



BOZO WALKER guaranteed to cause a "laugh riot". Walker gets able comedy assistance from Nate "Slick" Evans

BUSINESS DIRECTORY

OF HOME TOWN BUSINESS PEOPLE READY TO SERVE YOU

Automobiles Ted Rapp Pontiac, Inc. Rt. 130 & Taylors Lane Cinnaminson SALES - SERVICE - REPAIRS Phone 829-1700 ASK FOR "Pete" Heisler MERLIN MOTORS Residence Phone: 829-3811 Business Phone: 829-4800 DEL-RAN Hutton Chevrolet Co., 400 Pavilion Ave., Riverside 461-1281 Serving this Community for 18 Years New & Used	Auto Repairs A & J Auto Body Rebuilders "Any Auto Repaired—From a Dent To a Complete Wreck" 24-Hour Towing Service Day Ph. 829-1982 Night 829-1726 811 Rt. 130, CINNAMINSON Coal H. B. Williams, Inc. LEHIGH VALLEY COAL FUEL OIL 24-Hour Service Palmyra, N. J. Phone 829-1100 Dairies BISHOPS' DAIRIES QUALITY PRODUCTS Telephone HO 1-0476 HOME IMPROVEMENT SCARBOROUGH REMODELING CO. SHOWROOM AT 116 BARCLAY CENTER RT. 70, CHERRY HILL Free estimates from a door-to-door complete renovation. One contract includes all LOW COST FINANCING ON OUR SPECIAL PLAN - UP TO 10 YEARS Call HA 8-6060	Funeral Homes WEBER FUNERAL HOME 112 Broad Street Riverton, N.J. 829-2700 SNOVER FUNERAL HOME Frank A. Snover, Pres. Route 1130 Cinnaminson, N.J. Robert A. Snover, Mgr. Phone 829-0830 also located 829 Cinnaminson Avenue Palmyra, N.J. William J. McGee, Mgr. Phone 829-0830 Hardware Rapp's Hardware Screens & Glass Replaced in Aluminum Frames 111W. Broad St., Palmyra Phone 829-0978 Liquor Store CINNAMINSON LIQUOR STORE ROUTE 130 Between Riverton Rd. and Highland Ave. Beer - Wines - Liquors FREE DELIVERY Phone 829-2856 JACK SHEA, Prop. Start Hours: 9 A.M. to 10 P.M. Monday Thru Saturday This space reserved for your ad	Liquor Store PALMYRA LIQUOR STORE BEER • WINE • LIQUOR 107 W. Broad St., Palmyra FREE DELIVERY 829-0382 Paperhanging Free Estimates . . . Guaranteed Work PAPERHANGING wallscraping • Patch Plastering John Stojanov Specializing in hanging vinyls, walltex, smitan, etc. 665-6584 . . . or . . . 235-0557 Plumbing Arthur W. Wolfschmidt PLUMBING - HEATING ROOFING 712 Morgan Ave., Palmyra Phone 829-0659 H. D. Hullings & Son Plumbing - Heating - Roofing UNITED STATES OIL BURNERS 202 Broad St., Riverton, N. J. Phone 829-0660 	Real Estate WALTER D. LAMON REAL ESTATE - INSURANCE 516 Cinnaminson Ave., Palmyra Phone 829-7500 1630 Riverton Road, Riverton Phone 829-1600 The REEVES Agency REAL ESTATE INSURANCE 529 Cinnaminson Ave., Palmyra Phone 829-0787 W. REX McCROSSON INC. Insurance 16 E. Broad St., Palmyra Phone 829-1500 Services ROMANO SERVICE 136 Second St., Riverside, N. J. Maytag Dealer, Repairs on all makes of washing machines and dryers. Parts for most makes in stock. Call 461-0156 C-WILLINGBORO For Repairs on Dishwashers, Ovens, Ranges, Disposals, Washers and Dryers. 24 HR SERVICE Hotpoint - Kenmore Whirlpool - Hotpoint - Kenmore Service Charge \$5 Serving Cinnaminson, Riverton, Delran, Palmyra 877-0914
--	---	---	--	--

For Direct
Classified Ad
Service Call
829-0721

CLASSIFIED ADS

Classified Ad Rates
\$1.50 min. up to 20 words
4c per word thereafter
Display Classified
\$3 per col. inch

BUSINESS OPPORTUNITIES

Make Money for your organization! Sell substitutes for The New Era. Phone 829-0721 or 829-0712 Monday through Friday until 4:45 p.m. or apply to The New Era office, 609 Main St., Riverton.

FOR RENT

U-Haul Trailer Rentals. Landgraf's Mobile Service, Route 130 and Willow Drive, Cinnaminson. Hand Trucks and Furniture Pads also. Phone 829-9725.

FOR SALE

Fire-Place Wood - seasoned oak. Delivered and Stacked. William H. Koser, Jr., Riverside, N.J. Phone 461-4692.
 Antiques and Furnishings Bought and Sold. Our Piece or Estates, Appraised or Auctioned. The Web Shop 111 Broad, Riverton... 829-2033

WANTED

WANTED - Good used Citizen's Band Transceiver, 5 watt. Also good plane antenna. Call after 5 p.m. - 829-3191.

COINS WANTED

Buy & Appraise-Buy Proof Sets - Buy B. U. Rolls. LARGE ESTATES WANTED-QUICK, QUIET CASH LYN BERR 829-4083

HELP WANTED

WANTED - Receptionist, typing and shorthand required. 40 hours, air conditioned office overlooking large boat show room. Write qualifications, age, experience, references, etc. No phone or personal visits will be considered. DREDGE HARBOR YACHT SALES, Riverside, N. J.
 Paper Boys living in Riverton, Riverside and Delran to deliver The New Era once a week. Apply to the New Era office, 609 Main St., Riverton, Monday through Friday until 4:45 p.m. or make application in writing.

MAN OR WOMAN to supply consumers with Rawleigh Products. Can sell \$50. weekly part time, \$125 and up full time. Write Rawleigh, Dept. NJB 16C-336, Chester, Pa. 19013

HOME IMPROVEMENTS

PAPERHANGING PAINTING
 -Free Estimates-
J.V. SILER ST 3-2487

PAINTING INTERIOR & EXTERIOR - Carpentry - Alterations - Repairs & new additions. Floors, ceilings & walls tiled. Call evenings. FRED FICKEL 783-2668.

CARPENTRY - BLOCK, BRICK, CONCRETE, stucco, garages, patios, attic: expanded, finished. Ceilings tiled, walls paneled, roofing, siding. Aluminum storm windows, doors. Free estimates. J. ROMAN, ST 3-2685.

"DON'T HANG YOURSELF!"
Paperhanging
 Painting - Wallscraping
 Murals
 Sanitex - Walltex
 Clean Expert Work
ALBERT J. FARINA
 RO 7-2351

LOST & FOUND

LOST - Dog - Missing since Jan. 14, all black miniature male poodle, 3 years old, Route 130, New Albany Road and Chestnut Hill Drive area. Children's pet. Reward. 829-1387

PAINTING & DECORATING

INTERIOR - EXTERIOR PAINTING, Cabinets sprayed, D & W PAINTERS. Call anytime. 933-1357.

PLUMBING & HEATING

Kerr & Gruber
 PLUMBING & HEATING
 ST 3-4715 YK 1-7258

SERVICES

BERLIN UPHOLSTERY SHOP
 502 S. White Horse Pk., Berlin, N.J. Al Pfeiffer, RO 7-0767. Free estimates.
 UPHOLSTERY & REPAIRING. Living room suites made to order, Italian-French Provincial & Modern. 500 Berlin Rd. ST 4-2864

JUNK CARS IN YOUR WAY--
 let us move them. 547-2949
TREES TAKEN DOWN
 hauled away, brush removal, light hauling. Estimates given. 787-5105

WASHER SERVICE
 Kenmore
 RCA Whirlpool
 Westinghouse Norge
 Plus other makes
JOHNIES SERVICE CENTER
 ST 3-2672

INSURANCE

ALLSTATE INSURANCE
 For Allstate insurance in this area... Call
428-6944

LOANS

Get **\$1,022 CASH**
 Repay only \$34 per month
 (36 months includes life insurance)
FIRST CAMDEN NATIONAL
 BANK AND TRUST COMPANY
 Members Since 1812
 Since 1936

APARTMENTS FOR RENT

--Low Rental--
 Arkay Apartments
 ALBION, N.J.
 -Sample Open-
 Arkay Gardens
 LYNDENWOOD, N.J.
 RO 7-2937 RO 7-4230

REAL ESTATE FOR SALE

CINNAMINSON -- All Brick Bungalow, 26' liv. rm., knotty pine kit., 2 bdrms., new bathroom on 1st fl., 2 bdrms., on 2nd fl., garage, bsmt. Only \$12,900.

RAYMOND J. WATNER, Realtor. 829-0006. After 5:30 call Mr. Spain, 461-2130 2-5

WINSLOW TOWNSHIP
 Best for Investors & Buyers, midway Phila - Camden & Shore #561, both Pikes & Expressway. Lge. Farms for Professionals. Small Farms for #2 Homes. 1.5 Acre Lots for Building. GOVERNMENT REPOSESSED HOMES WITH LITTLE MONEY REQUIRED. Contact Harrison or Kelly. ARC RLTY. Blue Anchor. 561-4504.

RU READY TO MOVE

or thinking of selling your home? If so, call our office for conscientious personalized service.

Joseph J. Grossi, Jr.
 Realtor
 1118 S. White Horse Pk.
 SOVERDALE
 ST 4-2474

REAL ESTATE FOR SALE

IT HAPPENS EVERY YEAR ABOUT THIS TIME
 Every year about this time many families decide to buy a new home. They read all the Real Estate advertising, they visit new housing developments, they stop in at their neighbors to discuss houses.

Every year about this time when its all over, more people find what they are looking for in the planned, thoughtful REAL ESTATE SALES SERVICE, provided by our staff. There must be a reason. CALL US TODAY, to list your property for most efficient service.

M. M. Murphy
 REALTOR
 303 W. II. Pk. Audubon
 547-7176 547-7178 547-7222

REAL ESTATE FOR SALE



Treasure hunting? Good luck hunting!... call **Farrill & Hill**

REALTY
 BERLIN VICINITY - 3 Bdrms. Rancher, nicely situated in ex. cond. Priced at only \$10,600. Must be seen. Call Now.
 103 S. W.H. Pk. Berlin
 424-1113 767-5151

CLASSIFIED AD FORM

Only \$1.50 For 20 Words

4c Each Additional Word
20-Word Min. Charge — Ordinary Type

All Classified Ads Payable in Advance
 Copy must be in The New Era
 By 2:00 P.M. Tuesday for Next Insertion
 For Classified Display Information Call
829-0712

USE THIS HANDY AD FORM

INSERTION DATE: NO. OF WORDS: REMITTANCE ENCLOSED: PLEASE ENCLOSE MONEY ORDER OR CHECK

Name Address Town Phone
 PRINT WANT AD BELOW CLASSIFICATION

MAIL TO: THE NEW ERA
 609 Main St.
 Riverton, N.J. 08077



SHOP A & P

The store that cares . . . about you!

EXTRA SLIPS
TO HELP YOU
WIN!

DOWN-TO-EARTH LOW PRICES . . . AND YOU CAN

WIN UP TO \$1,000 IN CASH!
PLAY BONUS BINGO AT A&P!



\$1000 WINNER
E. C. ALLENSHEPSKI



\$500 WINNER
MRS. S. BOMBERGER



\$100 WINNER
MRS. J. KISSINGER

FRESH 2- TO 3-POUND FRYING OR BROILING

CHICKENS

LEG OR BREAST QUARTERS
.. ALSO SPLIT OR CUT-UP
CHICKENS
lb. **31¢**

Whole
Chickens

27¢ NONE
PRICED
HIGHER

CHICKEN PARTS	LEGS OR DRUMSTICKS lb.	45¢	BREASTS OR THIGHS lb.	53¢
BONELESS CHUCK ROASTS	SUPER-RIGHT QUALITY NONE PRICED HIGHER			lb. 58¢
BONELESS CROSS CUT BEEF ROASTS	SUPER-RIGHT QUALITY			lb. 77¢
SMOKED HAMS	SUPER-RIGHT Shank Portion lb.	38¢	Butt Portion lb.	48¢
SIRLOIN or PORTERHOUSE STEAKS	lb.			99¢
SHOULDER LAMB ROASTS	3-lb. In lb.	59¢	Boneless lb.	79¢
LAMB CHOPS	Shoulder Blade Cut lb.	69¢	Round Bone lb.	79¢
LARGE LINK SAUSAGE	lb.			67¢
ARMOUR HAMS	GOLD STAR OSCAR MAYER 3-lb. can	\$9.79	8-oz. can	59¢
LUNCH MEATS	Serve'n Seal			
SCRAPPLE	5-lb. can	\$1.29	3-lb. or more ON-COR FROZEN	2-lb. \$1.38
BEEF & GRAVY	SLICED BEEF			lb. 79¢
RED SNAPPER	FRESH FLORIDA STANDARD 8-oz. can			79¢
OYSTERS	12-oz. can			\$1.19

A&P'S FARM-FRESH FRUITS & VEGETABLES!

SUNKIST . . . 72 SIZE

NAVEL ORANGES 12 for **65¢**

CRISP ICEBERG LETTUCE NONE PRICED HIGHER 2 heads **29¢**

FRESH FLORIDA CORN NONE PRICED HIGHER 6 ears **39¢**

JUICY SUNKIST LEMONS 6 for	23¢	AVOCADO PEARS each	15¢
VINE RIPENED TOMATOES lb.	25¢	CENTER PIECES FOR VALENTINE DAY each	\$4.00
FRESH FULLPODDER PEAS lb.	25¢	POTTED AZALEAS 4 1/2-inch pot	\$9.00

A&P FRESH MILK

HOMOGENIZED-PASTEURIZED
VITAMIN D

Buy the gallon carton with the
Plastic handle for your convenience!

gallon
carton

88¢

Half
gallon

47¢

THESE PRICES EFFECTIVE IN N.J. MILK CONTROL AREA 2.

A&P GUARANTEES SATISFACTION OR MONEY BACK!

NOW OPEN!

Another New A&P Market at . . .
4450 N. FRONT ST.
PHILADELPHIA, PA.

NONE FINER! INSTANT
A&P COFFEE

10-oz. jar **\$1.03**

"OUR OWN"
TEA BAGS

4 in pkg. **55¢**

A&P CHUNK LIGHT
TUNA FISH

3 7-oz. cans **83¢**

CHICKEN OF THE SEA GREEN LABEL
TUNA

12 1/2-oz. can **65¢** 3 8 1/2-oz. cans **\$1**

WHITE HOUSE INSTANT MILK

MAKES 12-QUARTS MAKES 20-QUARTS

pkg. **99¢** | pkg. **\$1.59**

ARMY PAGE CHOCOLATE COVERED

THIN MINTS

1-lb. box **45¢**

CAPN JOHN'S FROZEN FLOUNDER

DINNERS

2 10-oz. pkgs. **83¢**

WITH PEAS & POTATOES

SULTANA STRAWBERRY PRESERVES

2-lb. 8-oz. jar **89¢**

WARSAW FALCON POLISH

DILL PICKLES

1-quart, 16-oz. jar **59¢**

SILVERBROOK

BUTTER

1-lb. solid **75¢**

In 1/4-lb. prints lb. **77¢**

CHEESE SPREAD

CHEDDAR-BIT

2 1-lb. loaves **83¢**

CHEDDAR

CHEESE

lb. **73¢** EXTRA SHARP lb. **75¢**

A&P FROZEN GRADE "A" MIXED

VEGETABLES

2 10-oz. pkgs. **33¢**

JANE PARKER

HOT CROSS BUNS

8 in 10 1/2-oz. pkgs. **39¢**

JANE PARKER FRESH BAKED

BREAD SALE!

PLAIN OR SEEDED RYE BREAD OR
CRACKED WHEAT BREAD

SAVE 9¢
ON TWO
LOAVES

2 1-lb. loaves **45¢**

All Prices Effective through Saturday, February 11, 1967, in A&P Markets in Philadelphia and Vicinity